

Portable Enforcement Solution



CONTENT



Portable PTZ Dome



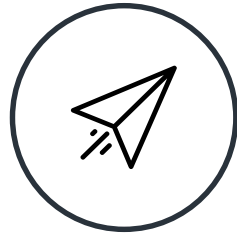
Body Camera



Helmet Camera



Case Study



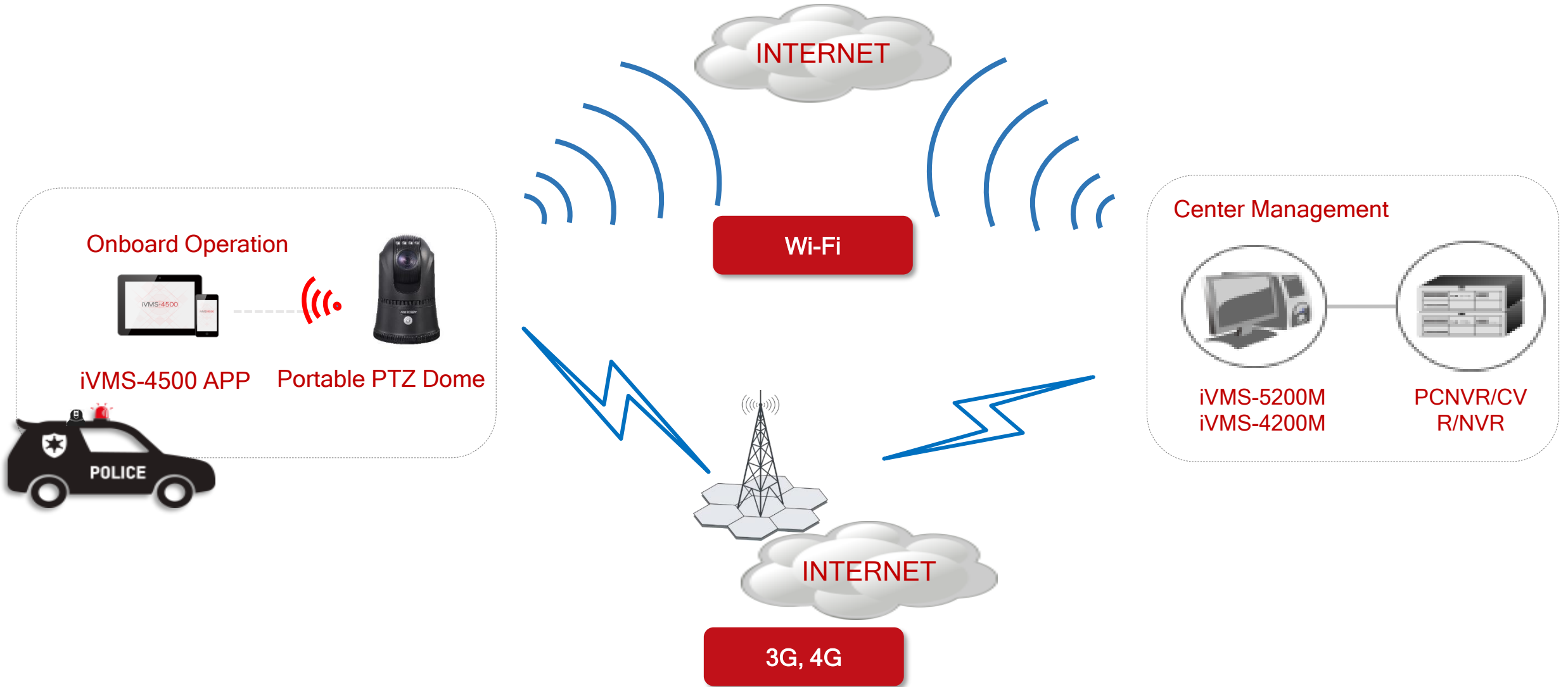
PORTABLE PTZ DOME

System Structure

| Highlight

| Product Introduction

System Structure



Portable PTZ Dome Solution

HIKVISION



On the roads, at the public squares or in rural areas – wherever you need surveillance equipment to go, Hikvision's products will go.

Highlight

HIKVISION



1 All-in-one design

Combination of an **ANPR/LPR camera**, **IR**, **3G/4G**, **GPS**, **Lens**, **dual SD cards**, **Wi-Fi AP**, **Bluetooth 4.0**, **replaceable battery** in one unit. All in one design contributes to easy installation and configuration.

Tripod for Portable Installation



Fast Magnetic Mounting



Fixed Installation



2 Fast & Easy Mounting

High-intensity **magnetic** or tripod mounted for emergent monitoring. Equip portable handle for carry.



3 Water-proof & Dust-proof Protection Level

Maximum resistance as standard, Industrial-grade technology vandalism withstands all weather conditions, with **IP66** rating.



The video recorded by **conventional camera**

The video recorded by **Portable PTZ Dome**

4 Anti-shake Design

Shaking image is always generated when camera at high zoom rate or deployed on the car roof . **With EIS technology**, camera can solve the issue very well.

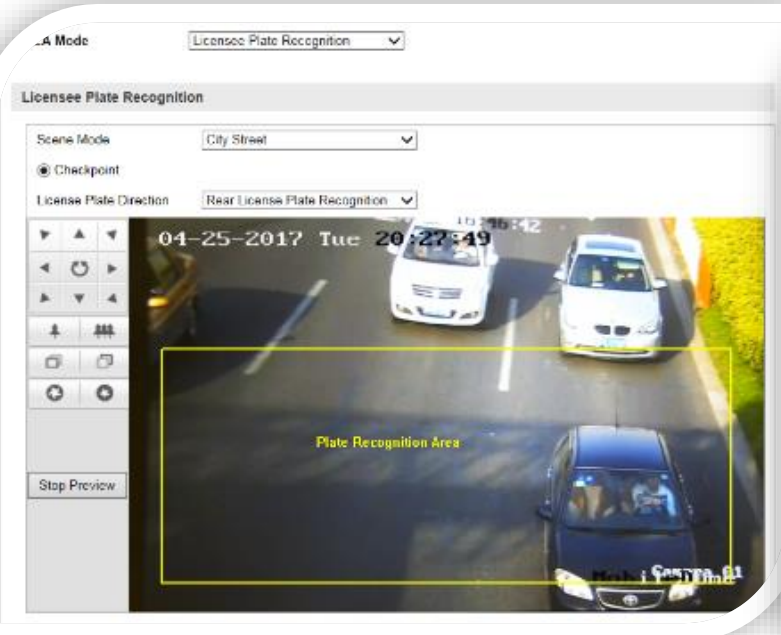


5 Easy Connection for Remote Live View and PTZ Control

Both on-board app operating and iVMS-4500 remote operating are available, purpose to **live view** or **observe ANPR** via Internet, stored in **Ezviz cloud** storage.

Highlight

※ iVMS-5200M customized ※



ANPR Region configuration



ANPR & GPS Position & Battery Capacity Overlay Appear



6

DeepinView

ANPR Algorithm

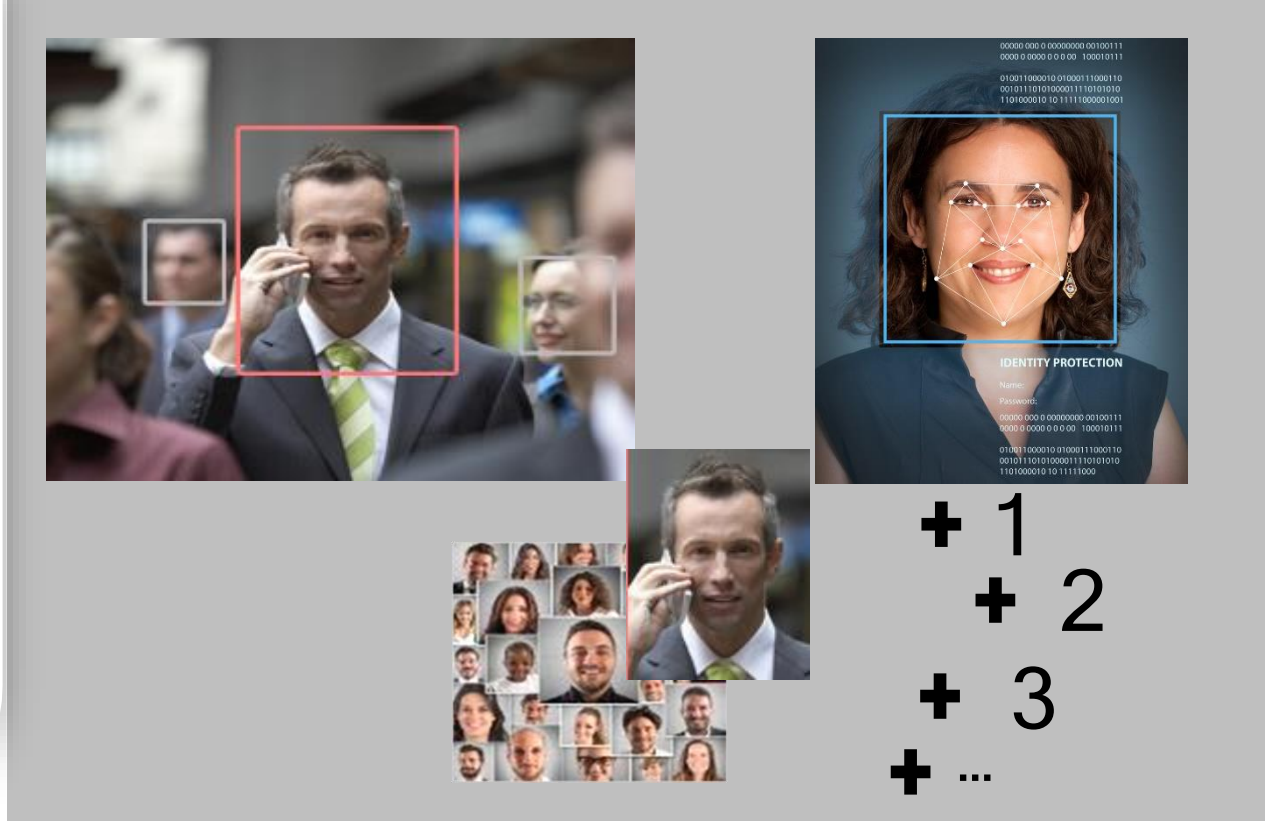
- ◆ Maximum 2-lane ANPR
- ◆ ANPR algorithm for **more than 83 countries**

- ◆ High recognition and capture accuracy
- ◆ Recognition in **less than 150 milliseconds**



Highlight

※ iVMS-5200M customized ※



7 Face detection and capture

Face capture by **switching firmware built in the camera**, Face detection up to **30 targets** concurrently.



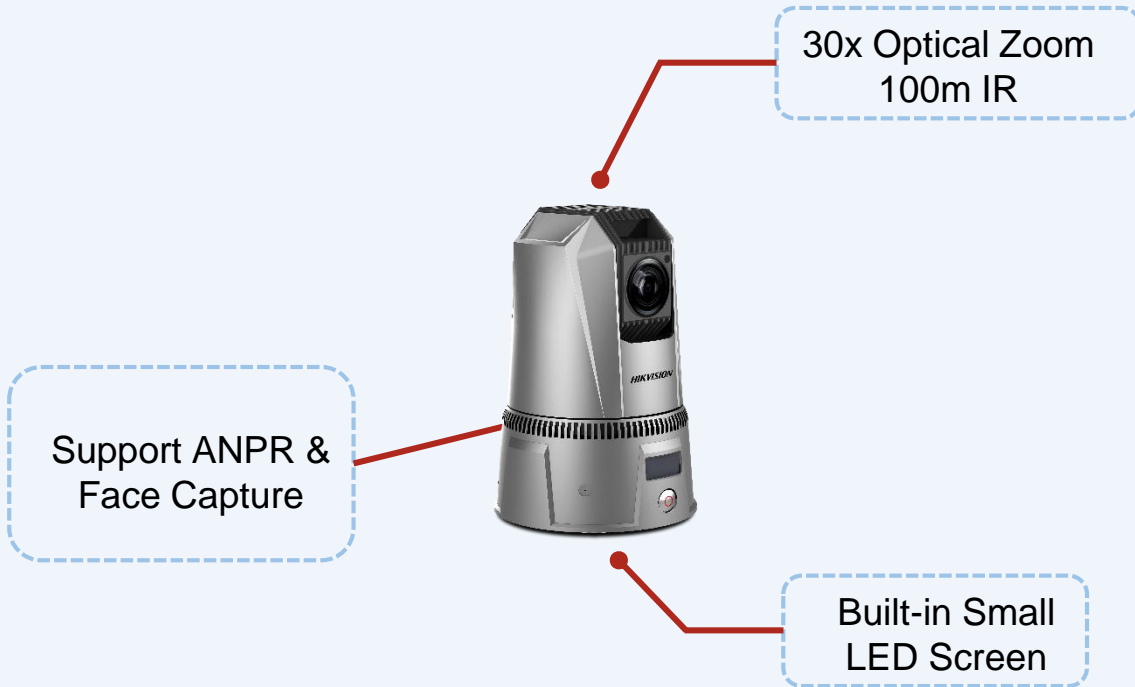
8 Remote Live View and GPS Positioning

Both **video** and **GPS position** are displayed in real time and track display on the map.

Portable PTZ Dome Introduction

HIKVISION

NEW



iDS-MCD202-B



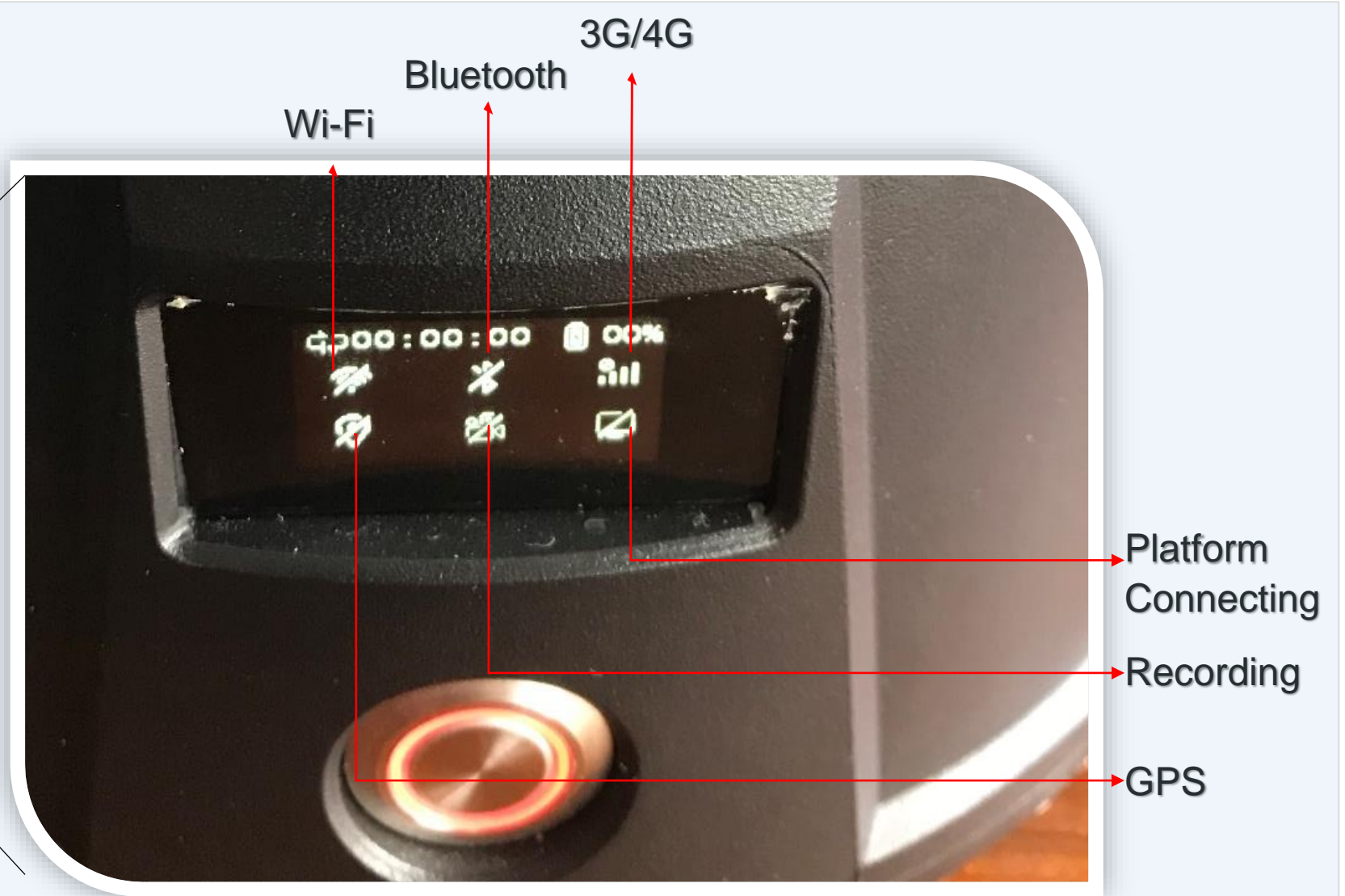
Deep Learning algorithm

- ◆ ANPR or Face Capture
- ◆ Built-in MIC & Speaker
- ◆ Built-in **Small LED Screen** (display battery capacity, GPS/4G status and other device information)
- ◆ **Dual SD card**
- ◆ 4G FDD-LTE/ 3G(WCDMA)
- ◆ **H.265/H.264**
- ◆ 2MP/1080p
- ◆ **30x** optical zoom, **16x** digital zoom
- ◆ GPS/BEIDOU
- ◆ Up to **9** hour operating time
- ◆ **100m IR**
- ◆ Supported platform: iVMS-5200M

Portable PTZ Dome Introduction



iDS-MCD202-B



Portable PTZ Dome Comparison

HIKVISION



Comparison	DS-MH6171I-A	iDS-MCD202-B
Video Resolution	2MP/1080P	2MP/1080P
Smart function	ANPR, Face capture	ANPR, Face capture
MIC & Speaker	None	Built-in
LED Screen	None	Built-in
Storage	Max 2 SD Card*128GB	Max 2 SD Card* 256GB
Wi-Fi	2.4GHz	2.4GHz/5.8GHz

Portable PTZ Dome Introduction

HIKVISION

Battery



- ◆ Capacity: 13400mAh/96WH
- ◆ Nominal voltage: 7.2V

Battery charger



DS-MH1490

- ◆ Power supply DC: 12V
- ◆ Charging current: 3A
- ◆ Charging time: 6h

Tripod



DS-MH1691-H

- ◆ Maximum diameter of outrigger: 28mm
- ◆ Minimum diameter of outrigger: 19mm
- ◆ Maximum height: 1770mm
- ◆ Minimum height: 395mm
- ◆ Weight: 2.01kg
- ◆ Material: aluminum alloy



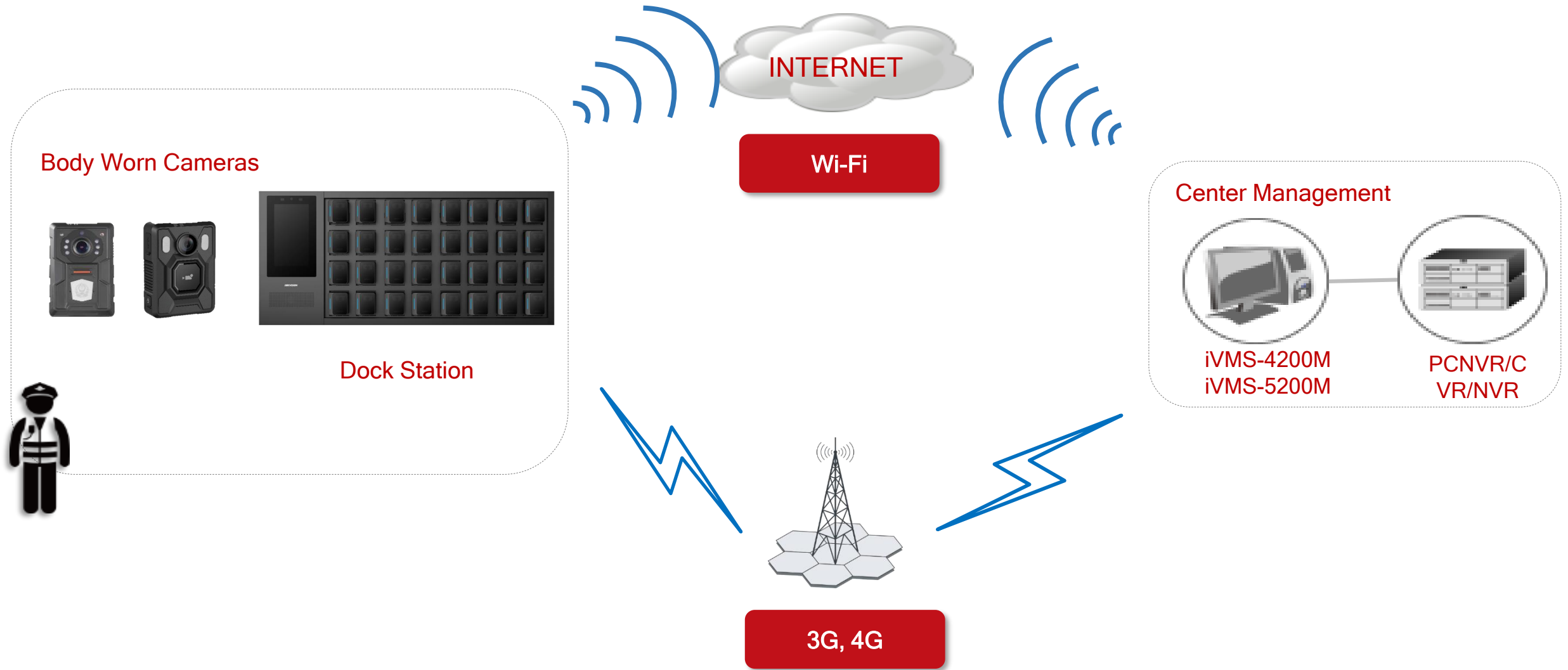
BODY CAMERA

System Structure

| Highlight

| Product Introduction

System Structure



Body Camera Solution

HIKVISION

Body Worn Camera records video, collects audio and captures pictures on the move. It records video at resolution up to 1080p at 25 or 30 fps, with all recordings capturing vital metadata such as date, time, GPS location, device number and user details to ensure evidential usage.

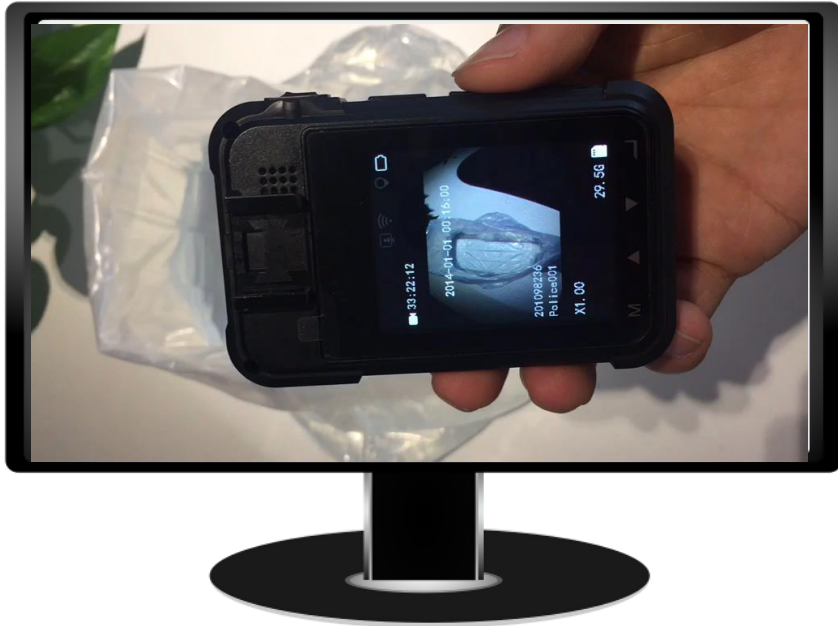




1 All-in-one Compact Design

High-definition video recording, camera, TFT LCD, battery, GPS location, light weight.

Waterproof Design



Removable Battery Design



2 Industrial Level Design

Rugged, wearable body cameras record activities of citizens and civil authorities as they happen. Their advanced technology, portability, and ease-of-use make them extremely effective companions for law enforcement. Equipped with IP67, and removable battery without shut down make it vandalism withstands all extremely use .

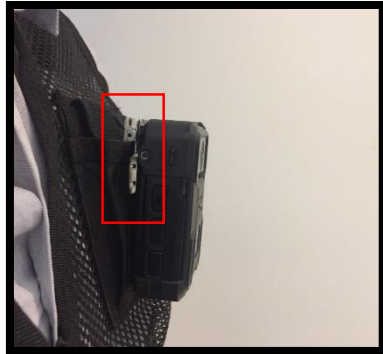
Highlight



Plastic Clip



Metal Clip



Chest harness



3 There is always a suitable harness

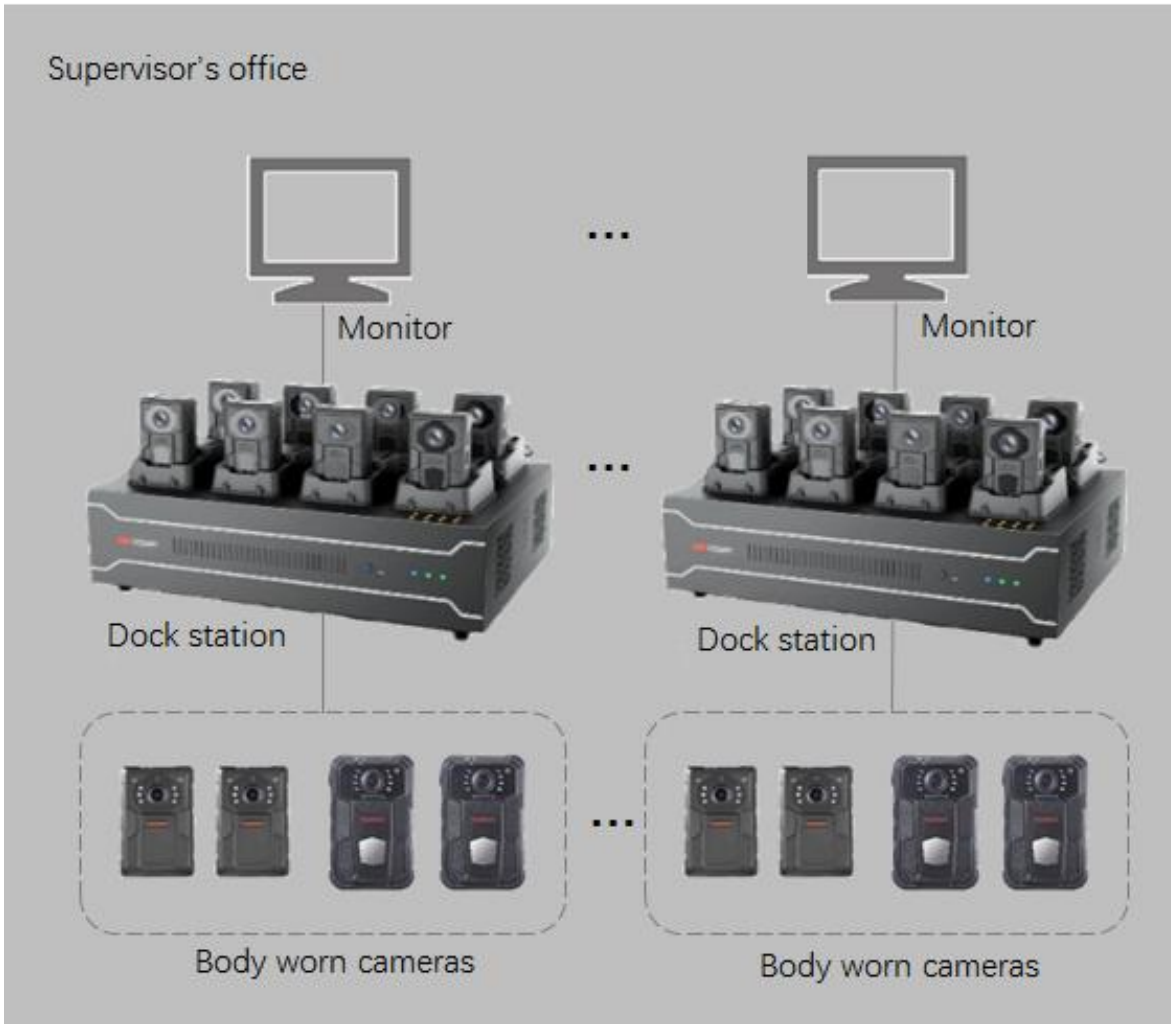
A variety of accessories are available as you like.



Highlight

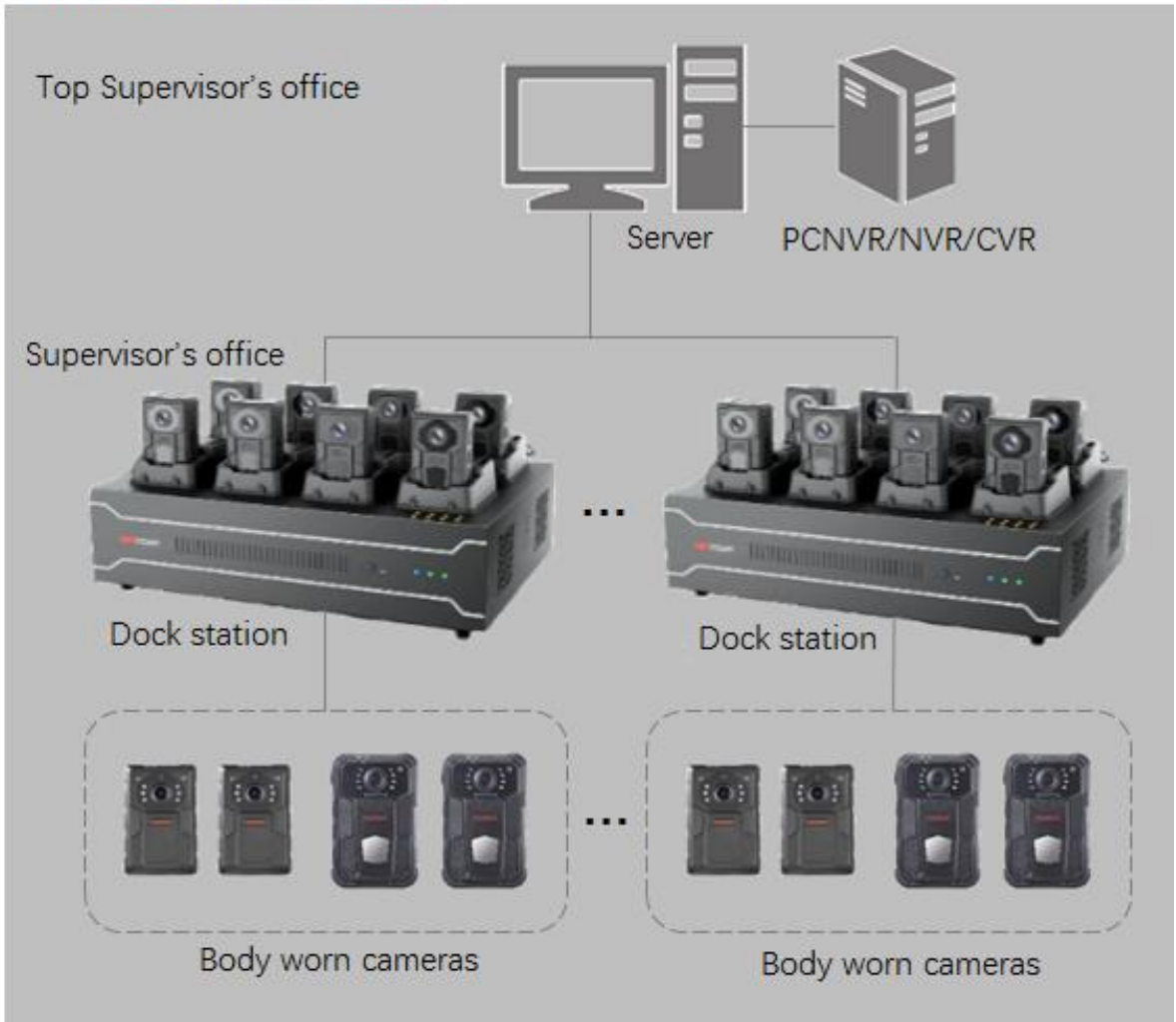
4

Video Record Backup



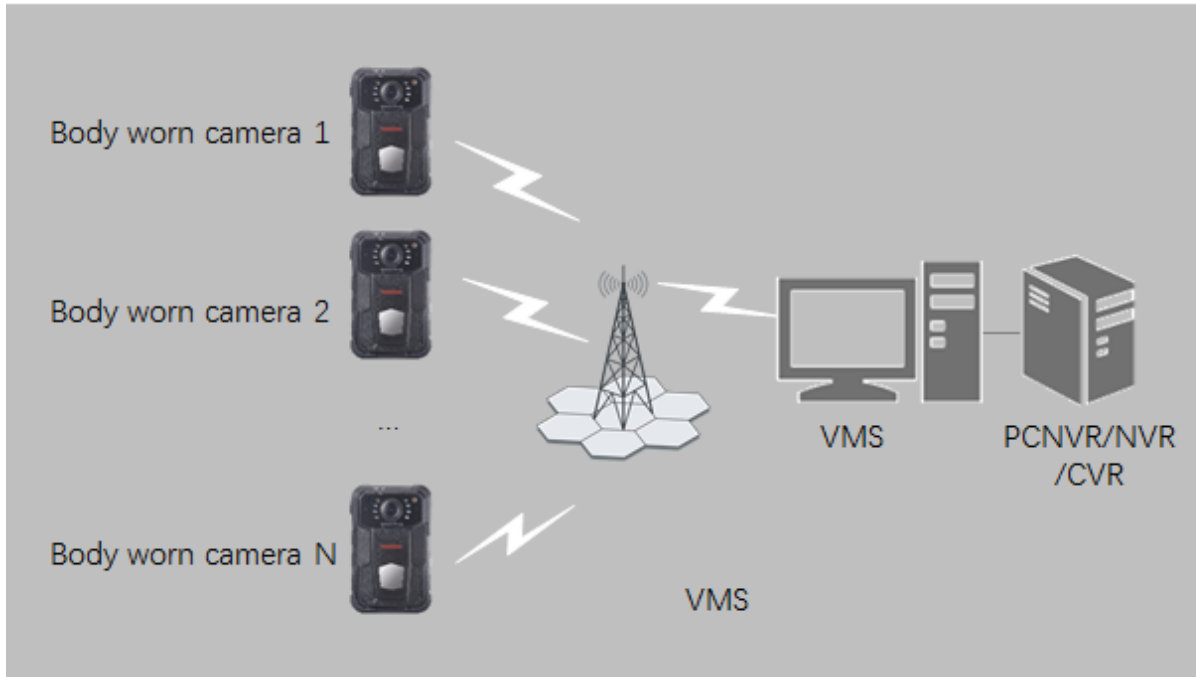
Record backup via dock station

* iVMS-5200-M customized *

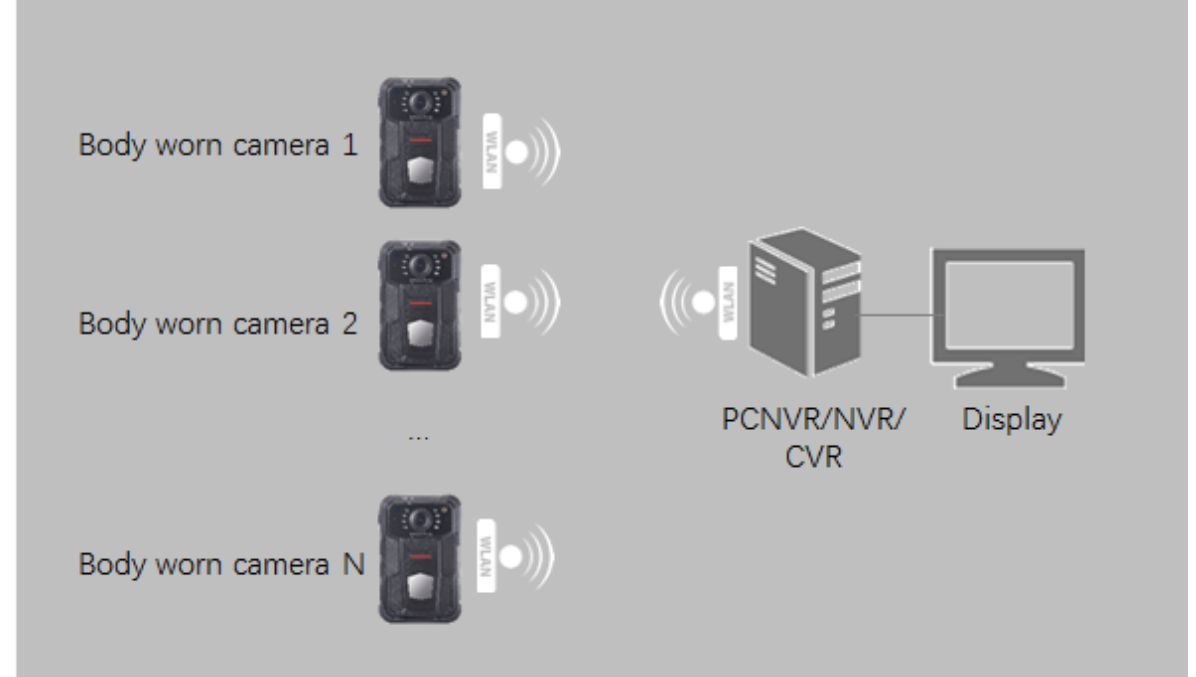


Record backup from dock station to central storage(Customization Required)

Highlight

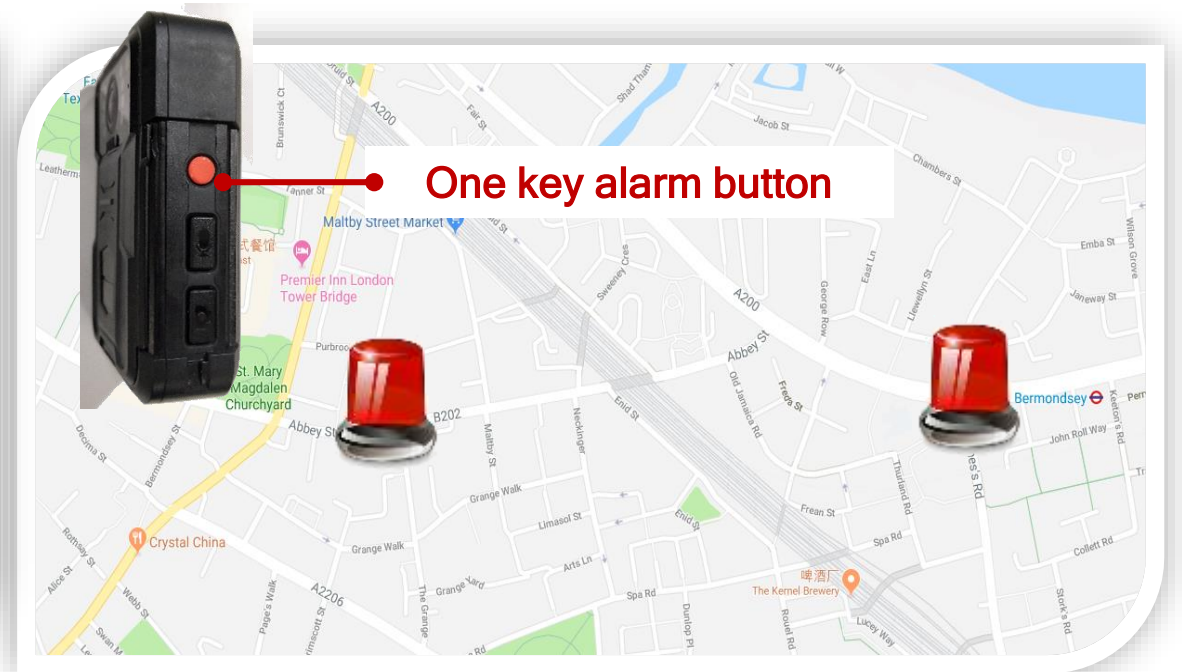
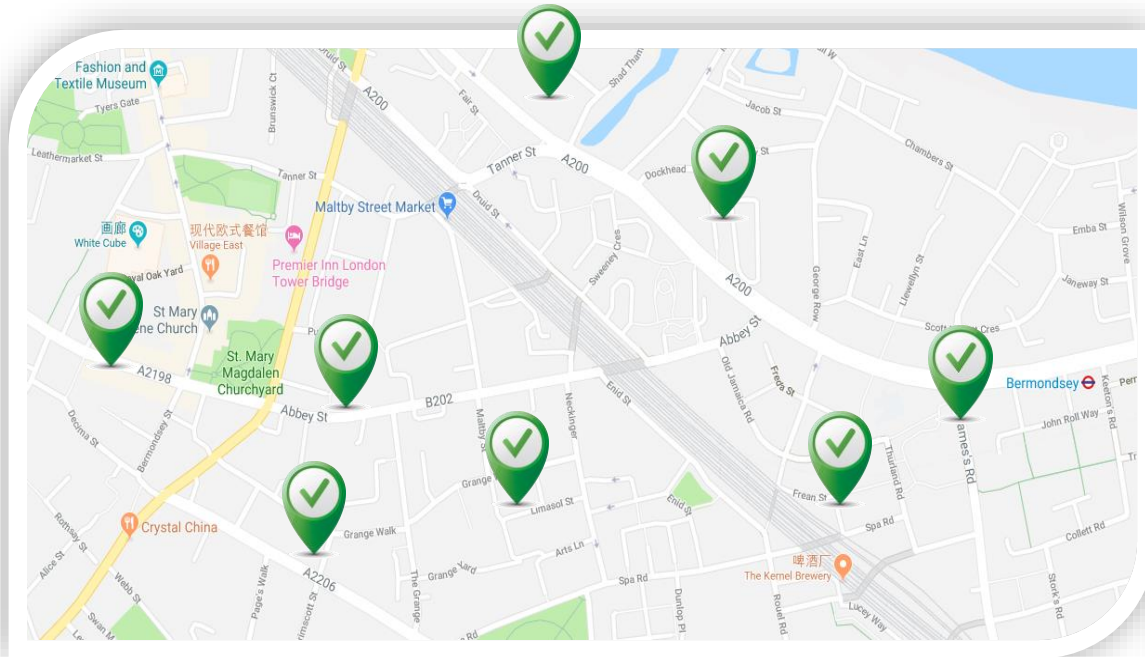


Record backup via 3/4G and manage video footage



Real-time liveview and store via Wifi

Docking stations charge bodycams and download captured video data when docked via USB port. External LCD screen provides a dashboard for device management, maintenance, and secured data storage.



5 Officer Position and alarm Position

Built-in GPS module and one key alarm button aids personnel in locating an incident as well as persons of interest. The body camera also supports real-time voice communication with the security center. After receiving an alarm, the center auto-positions the incident location through the GPS data and dispatches the nearest police team for support.



6 Remote Live View and Two-way Audio

Body worn camera supports Wi-Fi, 3G and 4G network connections so that video data can be streamed in real time to the back-end security center for live view and two-way audio with the back-end security center.

Body Camera Introduction

HIKVISION

new

12h battery life

ON/OFF



RECORDING

Large recording button,
easy to operate.

MUTE

TAG



Lighter Weight

Longer Endurance

Easier Operation

Cheaper Price

DS-MCW405

- ◆ 1080 p @ 25 fps
- ◆ 12 Hours Recording: Unremovable 2800mAh battery
- ◆ 75 × 55 × 24 mm, 107 g
- ◆ 1080p Recording +720P Live view(Wi-Fi version)

- ◆ GPS, Wi-Fi
- ◆ H.265
- ◆ IP67
- ◆ IR cut filter with auto switch

Body Camera Introduction

HIKVISION



DS-MH2211(B)

- ◆ 1080 p @ 25 fps
- ◆ Different colors for function keys
- ◆ Dismountable battery:
 - 7.5 h for 720 P
 - 7h for 1080 P @ 25 FPS
- ◆ 127 g, 81.5 × 54.5 × 26 mm
- ◆ **IP65**



DS-MH2311(C)

- ◆ 1080p @ 30 fps
- ◆ **9** Hours Recording: 3300 mAh removable battery
- ◆ Wi-Fi, 3G/4G
- ◆ H.265
- ◆ 2.4-inch LCD Screen
- ◆ **IP67**

Body Camera Introduction

HIKVISION[®]

NEW

Cheaper Price



Product	DS-MCW405	DS-MH2211(B)	DS-MH2311(C)
Main Stream	1080p @ 25 fps	1080p @ 25 fps	1080p @ 30 fps
Battery	12 Hours Recording: Unremovable 2800mAh battery	1650mAh removable battery. Replace battery without shutdown	9 Hours Recording: 3300mAh removable battery
Network Transmission	GPS, Wi-Fi	GPS, Wi-Fi	GPS, 3G/4G , Wi-Fi
Video Compression	H.264/H.265	H.264/H.265	H.264/H.265
Screen		2-inch LCD screen	2.4-inch LCD Screen
Day & Night	IR cut filter with auto switch	IR cut filter with auto switch	IR cut filter with auto switch
Ingress Protection Level	IP67	IP65	IP67
Dimension, Weight	75 × 55 × 24 mm, 108 g	81.5 × 54.5 × 26mm, 127g	95 × 60 × 29 mm, 190 g

Docking Station Introduction

HIKVISION[®]

new



DS-MDS003

- ◆ 13.3-inch large touch display
- ◆ Support maximum 32 multi-channel charging and transmission simultaneously
- ◆ 6 Slots, Up to 8TB capacity for each HDD, support RAID
- ◆ Support FR unlocking and device matching
- ◆ Dynamic display of charging and transmission progress

Body Camera Introduction

The device can only be unlocked by the corresponding face.

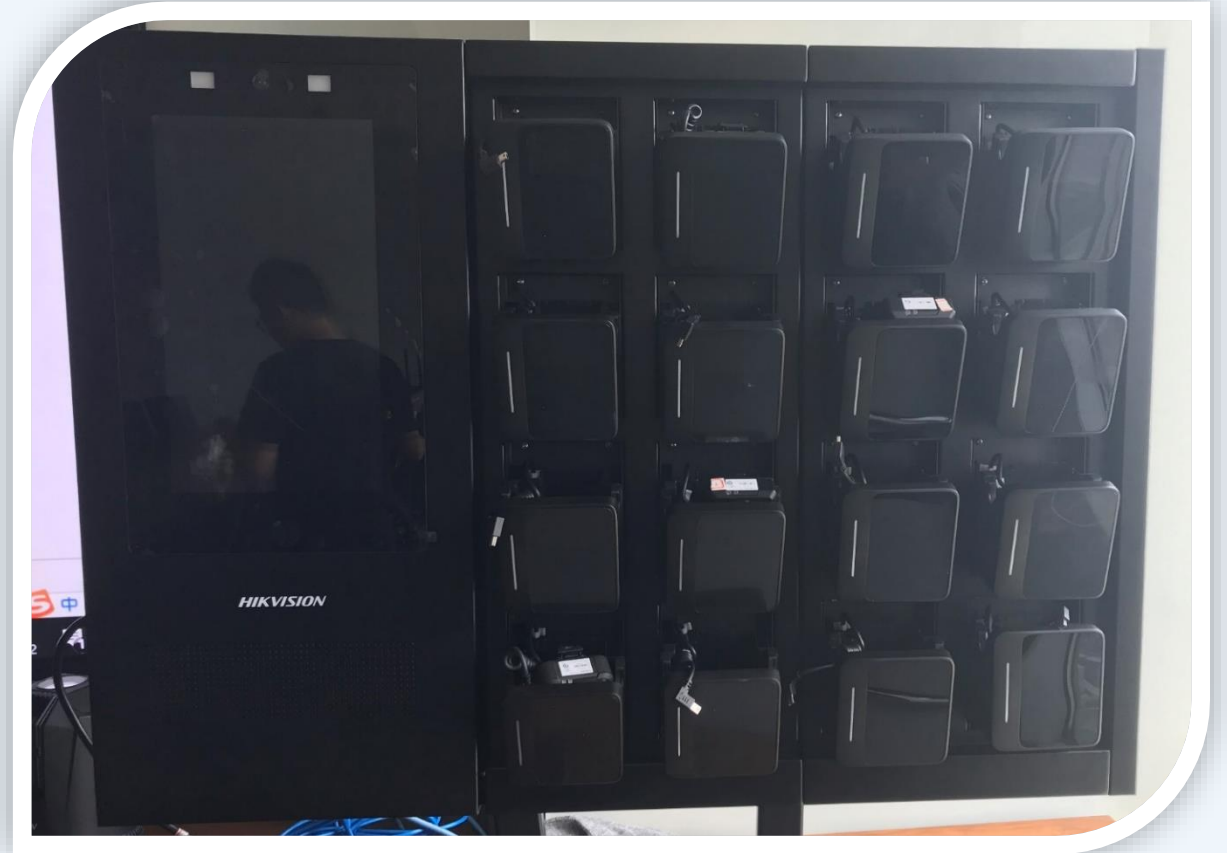
Ports Extension
(8/16/24/32 optional)

Large Touch Display

Dynamic display of
charging and transmission
progress



Docking Station Introduction – Example Device **HIKVISION**



Docking Station Introduction – Software GUI



The screenshot displays the software interface. On the left is the main menu with four widgets: Browser, Dock Station, Explorer, and Settings. On the right is the 'Body Camera Proof System' dashboard, which shows a total of 800G/1000G occupied space and a grid of 16 camera status cards. Each card displays the camera name, user number, device number, and a progress indicator for collected data. At the bottom of the dashboard are two large buttons: 'Store' (orange) and 'Take' (green).

Camera Name	User No.	Device No.	Collected (%)	Uncollected
user11	123456789	1	100%	0
tang2	775696	99988811	85%	30
tang9	775696	99988811	22%	580
tang10	775696	99988811	21%	630
tang3	775696	99988811	56%	130
tang4	775696	99988811	42%	230
tang11	775696	99988811	18%	730
tang12	775696	99988811	17%	780
tang5	775696	99988811	34%	330
tang6	775696	99988811	28%	430
tang14	775696	99988811	15%	930
tang7	775696	99988811	26%	480
tang8	775696	99988811	24%	530
tang16			Collected!	

Port No.1 Status: Uploading

Port No.16 Status: Collected

Various applications on the Main Menu



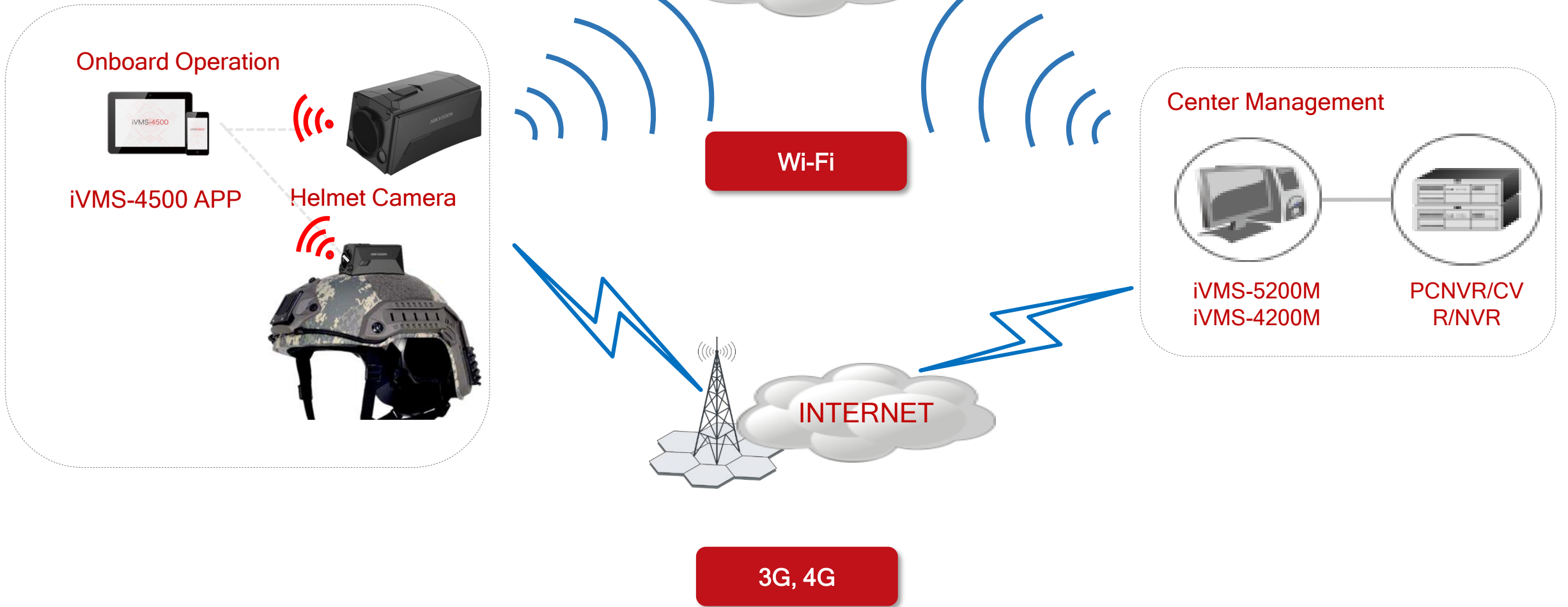
HELMET CAMERA

System Structure

| Highlight

| Product Introduction

System Structure





1 Mini compact design

The device is compact, which has the similar size with one credit card.

Highlight

HIKVISION



2 Several magic stick, support loading heavy weight.

(This helmet weighs approximate 2.5kg)

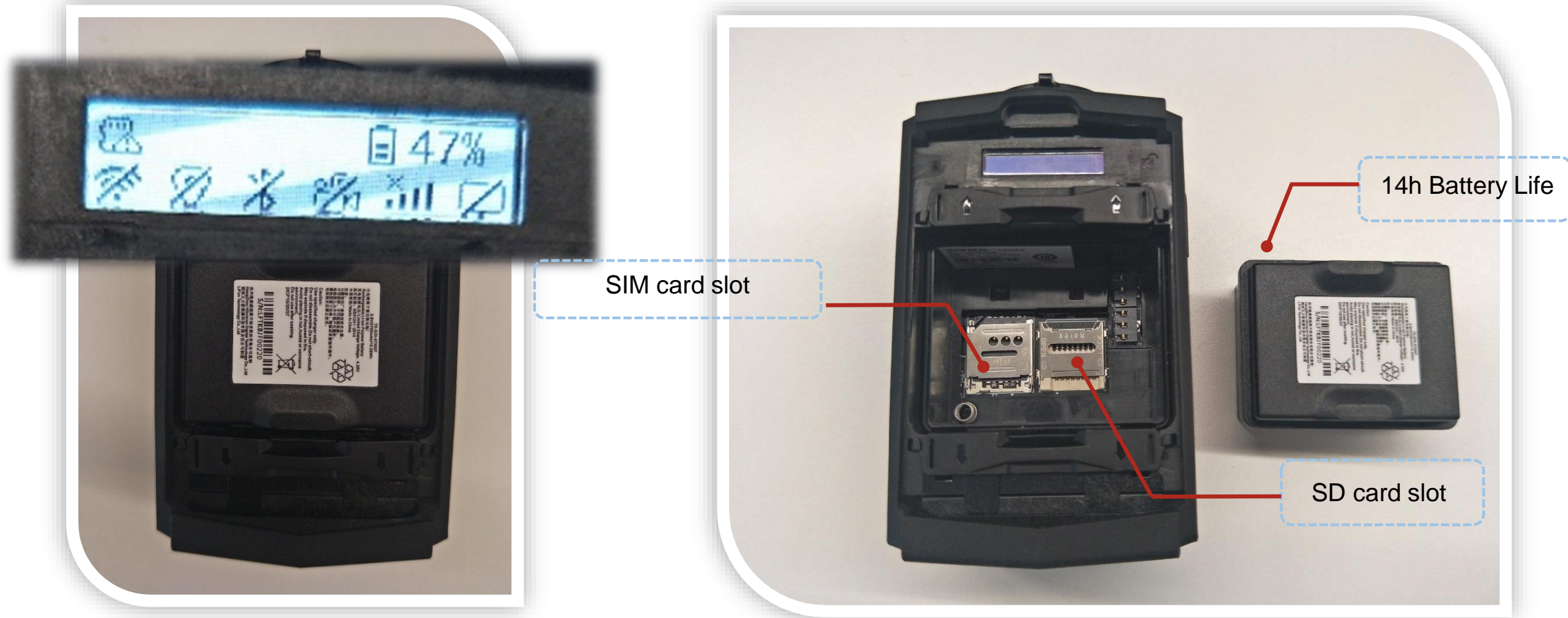


- 3 Multiple installation method for different application scenarios.
Flexible rotatable lens, ensure the video direction correct.



4 High power white supplementary lighting

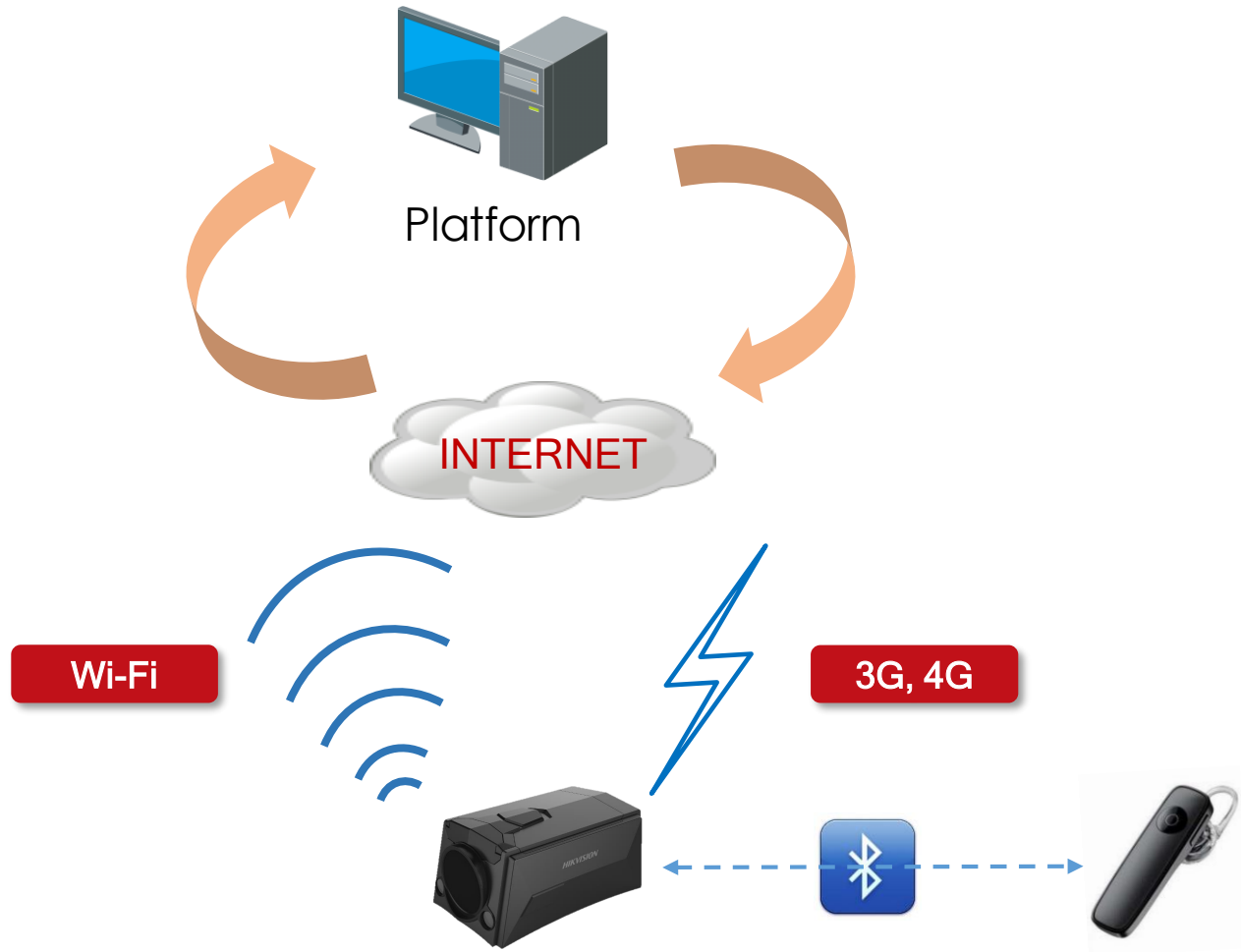
Highlight



5

Support removable battery, and a small display for showing device status

Highlight



 **Bluetooth®**

6

Support Bluetooth earphone which can transmit data with control center.

Highlight

HIKVISION[®]



The training in army



Law enforcement



Power line inspection



Railway maintenance

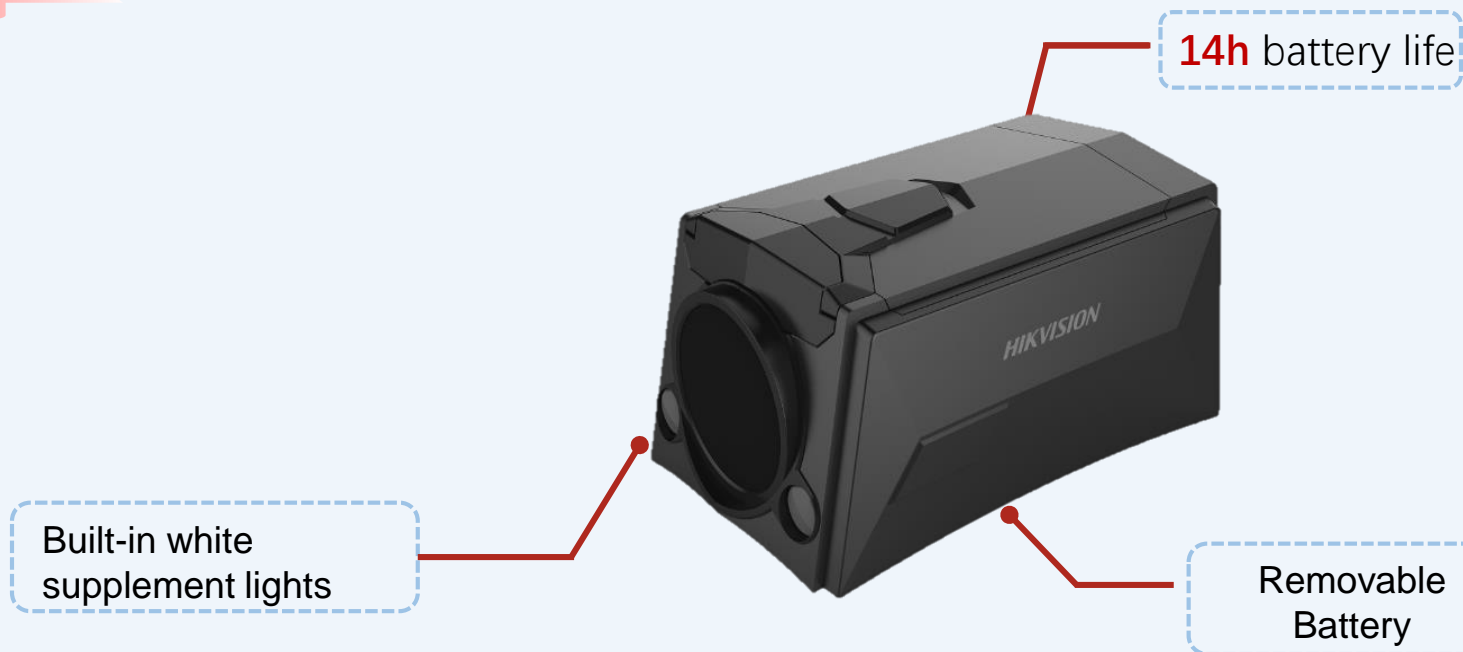
7

Support various application scenarios

Helmet Camera Introduction

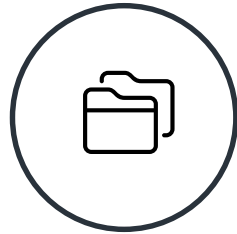
HIKVISION

NEW



DS-MCH508

- ◆ **5 MP** 1/2.7" progressive scan CMOS
- ◆ **One-key** capture and record
- ◆ 14-hour working time(720p), 12-hour(1080p)
- ◆ 4G, Wi-Fi, GPS, Bluetooth
- ◆ Rotating camera lens
- ◆ **H.265**
- ◆ **IP67**
- ◆ Built-in white supplement lights

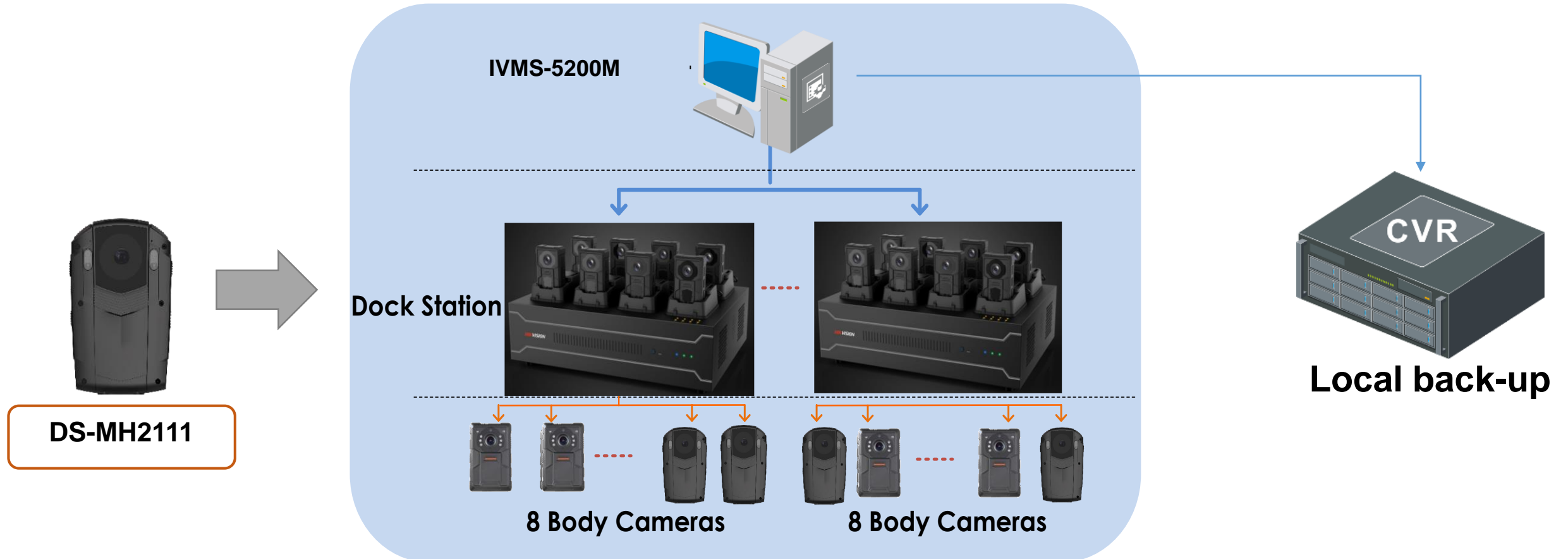


CASE STUDY

ATM Police Project in Guayaquil, Ecuador

HIKVISION

System structure



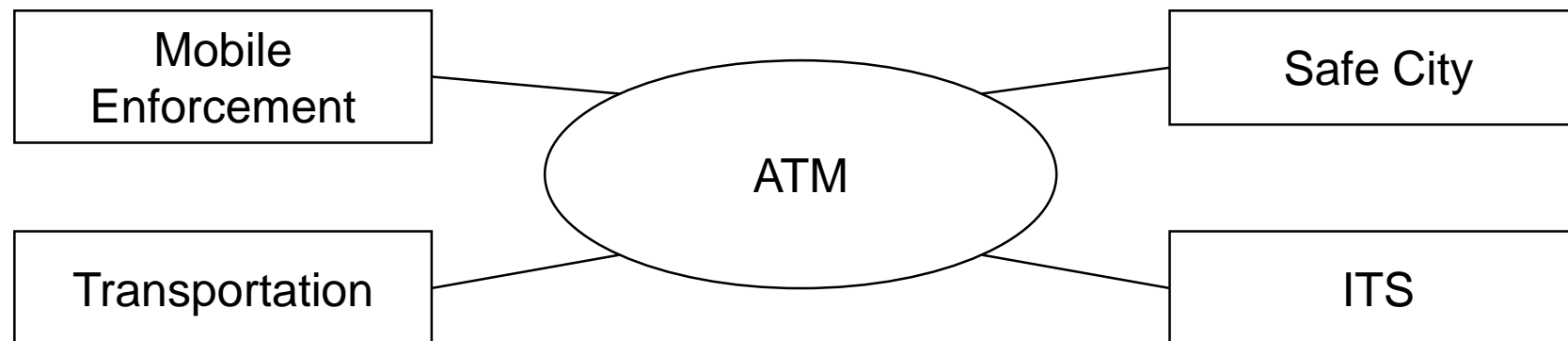
ATM Police Project in Guayaquil, Ecuador

Project spotlight

This project is the 2nd largest portable project in 2019. The end user is typical enforcement department.

We need to note two important meanings based on this project:

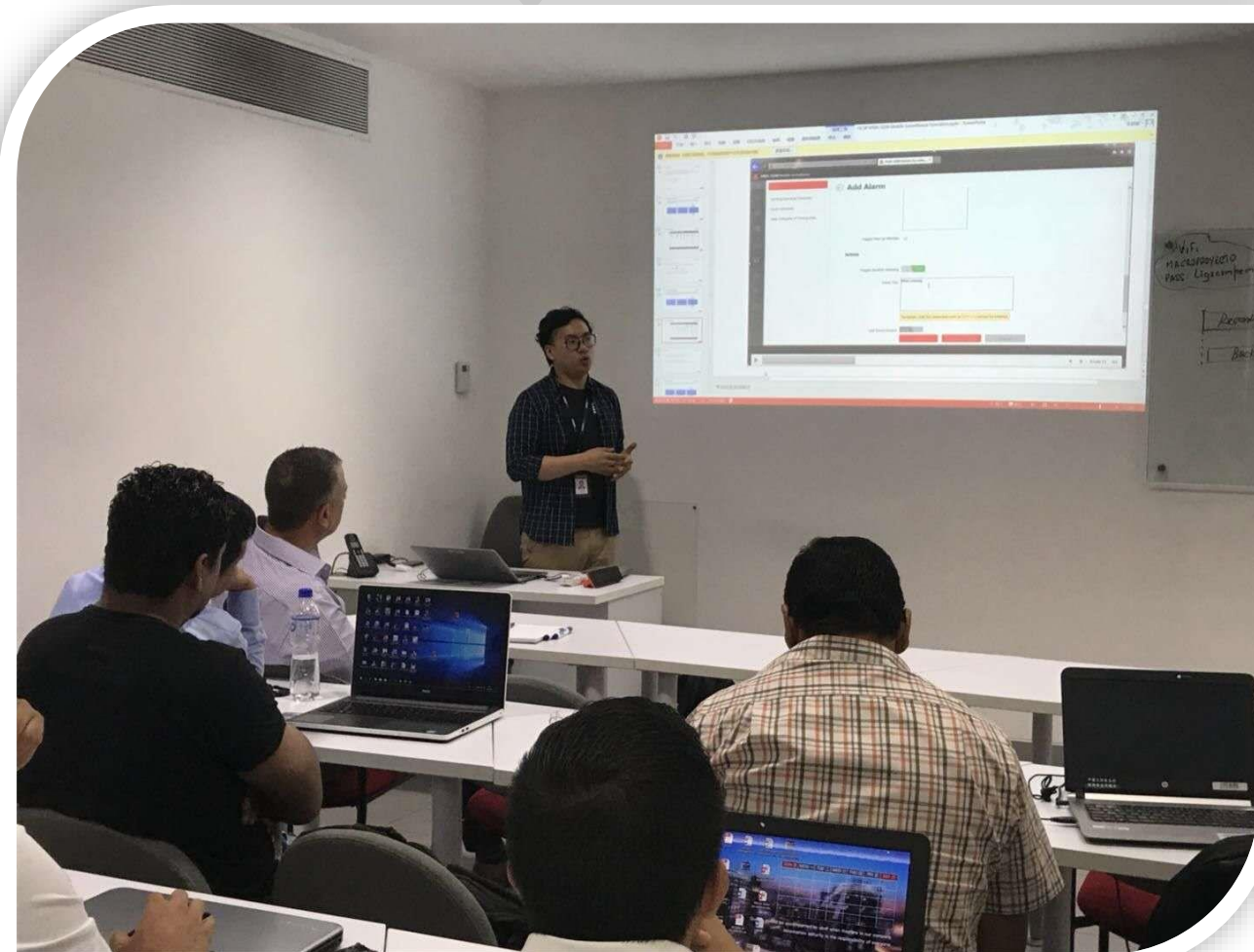
1. The first portable brand in Ecuador and occupy local market based on this case
2. Build stable cooperation with ATM and import mobile solution, safe city, ITS solution



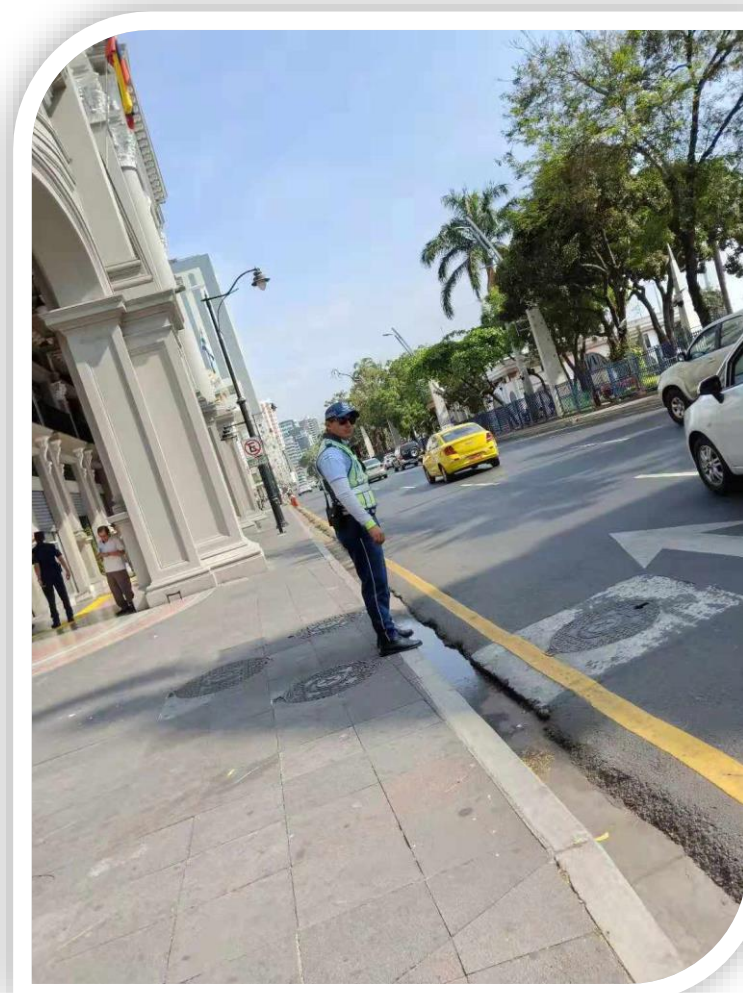
ATM Police Project in Guayaquil, Ecuador

HIKVISION

System performance



Training for SI



Enforcement Police Officer

ATM Police Project in Guayaquil, Ecuador

HIKVISION

System performance



atm.guayaquil • [Follow](#)

atm.guayaquil #ATMtecnología | Como parte de la innovación tecnológica en el control del tránsito de Guayaquil, nuestros agentes portan una cámara a través de la cual se puede grabar los procedimientos que llevan a cabo, como muestra de transparencia en su accionar. Desde el #CCITT, estos dispositivos son monitoreados permanentemente. #EstoEsReal

[View all 12 comments](#)

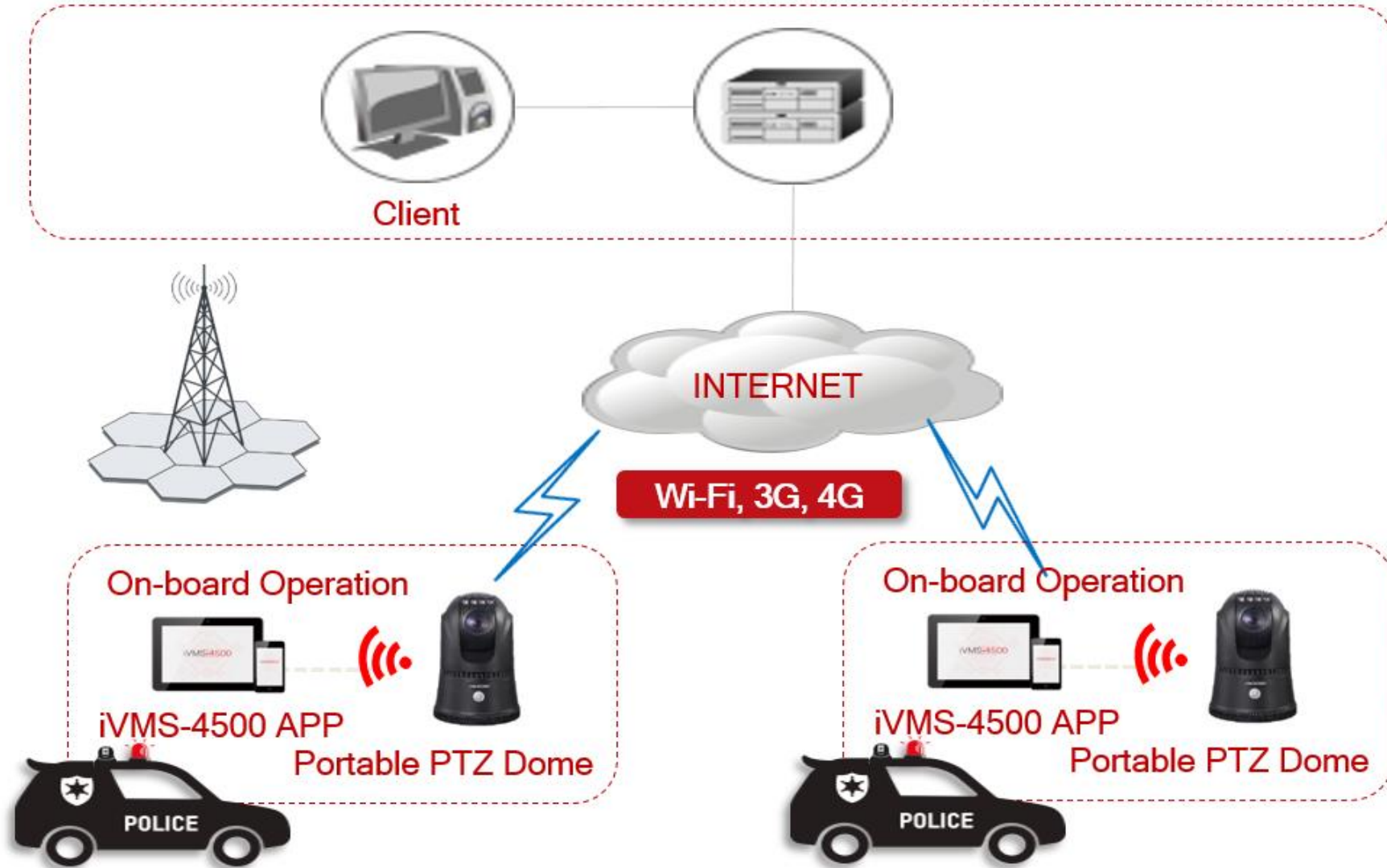


5,225 views

NOVEMBER 5

City Police Portable PTZ Dome Project , Israel **HIKVISION**

System Structure



City Police Portable PTZ Dome Project , Israel

HIKVISION

Project Overview

Police station purchased MH6171 for security use. They put equipment at those area with crowd for temporary monitoring. And it can also be set by the road or on the car roof to achieve vehicle control based on LPR function. The quality up to 300.



Product Lists:

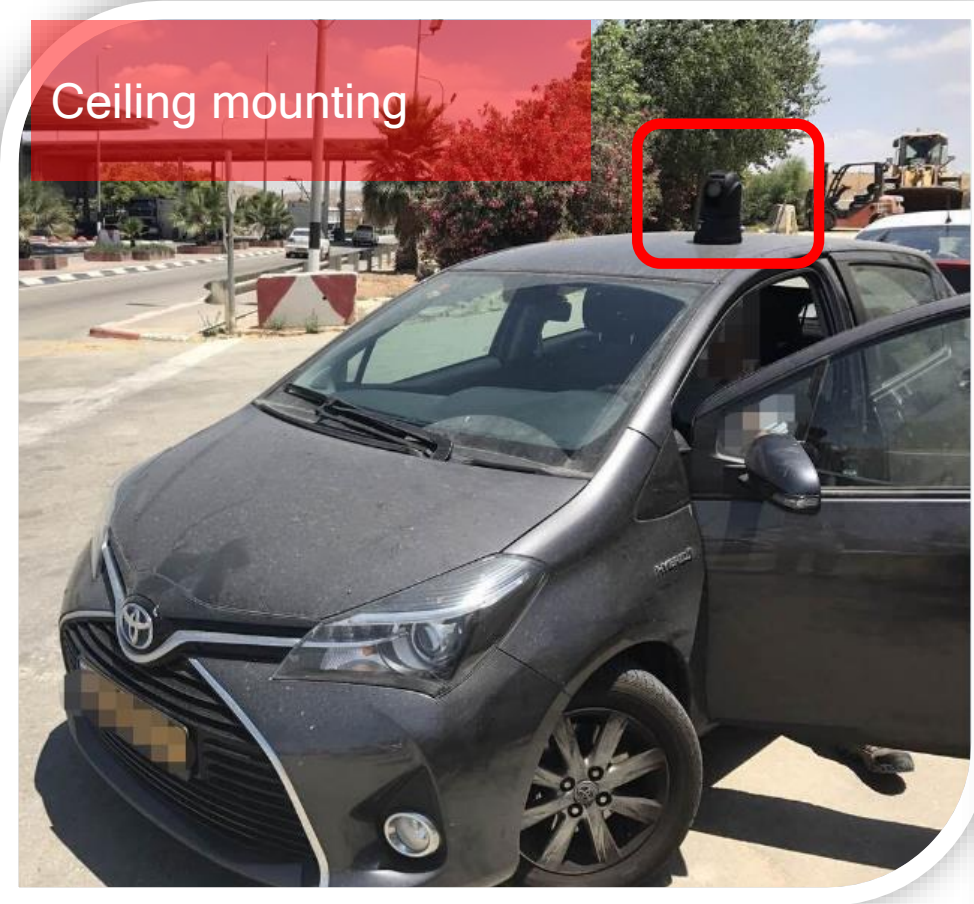
- DS-MH6171I

Quantity:

- 300

City Police Portable PTZ Dome Project , Israel **HIKVISION**

System performance



Installation Diagram



ANPR Performance

City Police Portable PTZ Dome Project , Israel **HIKVISION**

System performance



ANPR Performance

UEFA Champions League Project, Ukraine

HIKVISION

Project Overview

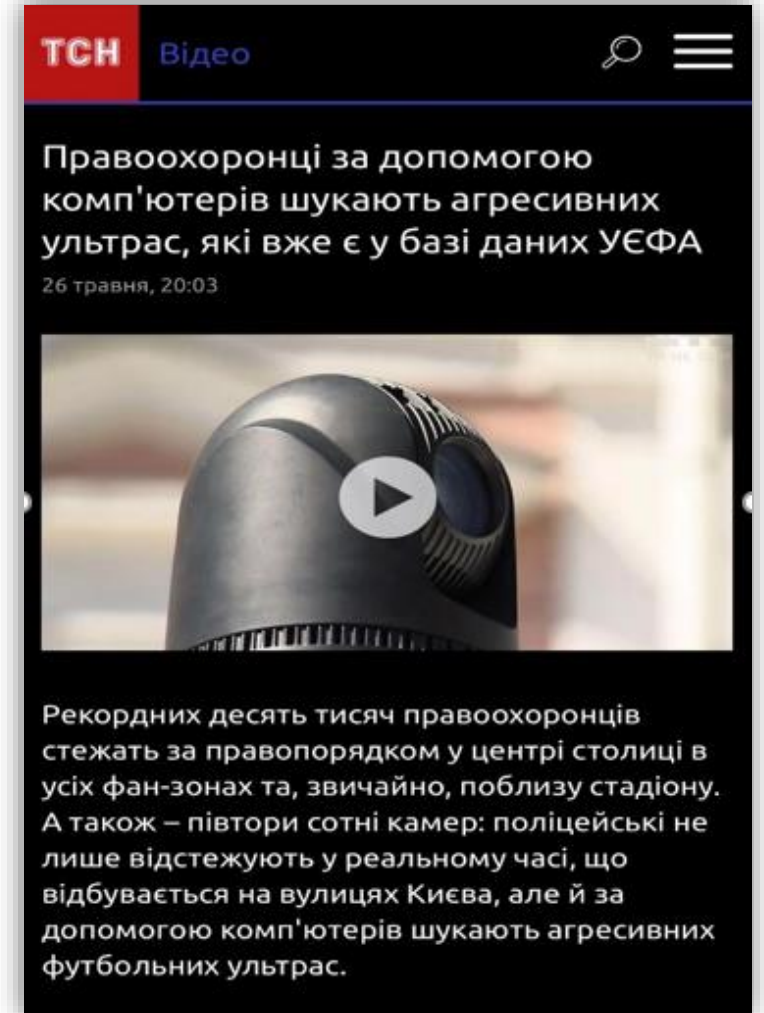
On May 26th, more than 60,000 foreign football fans came to Ukraine for UEFA Champions League Final 2018. Ukraine's police uses Hikvision Mobile Surveillance Solution and more than 150 portable speed domes, part of Hikvision Safe City System in Kyiv, to eliminate the potential threat of aggressive ultras and ensure the safety of athletes and fans during the finals.

Product Lists:

- DS-MH6171I

Quantity:

- 150



UEFA Champions League Project, Ukraine

HIKVISION

Project Overview

The Portable PTZ Dome is very flexible and convenient, it can be used as temporary monitoring when we want to handle emergency issues across the city. The product has magnet at the bottom, it can fast mount on the top of the car. Ensure the safety of UEFA Champions League Final 2018.



Tripod for Portable PTZ Dome

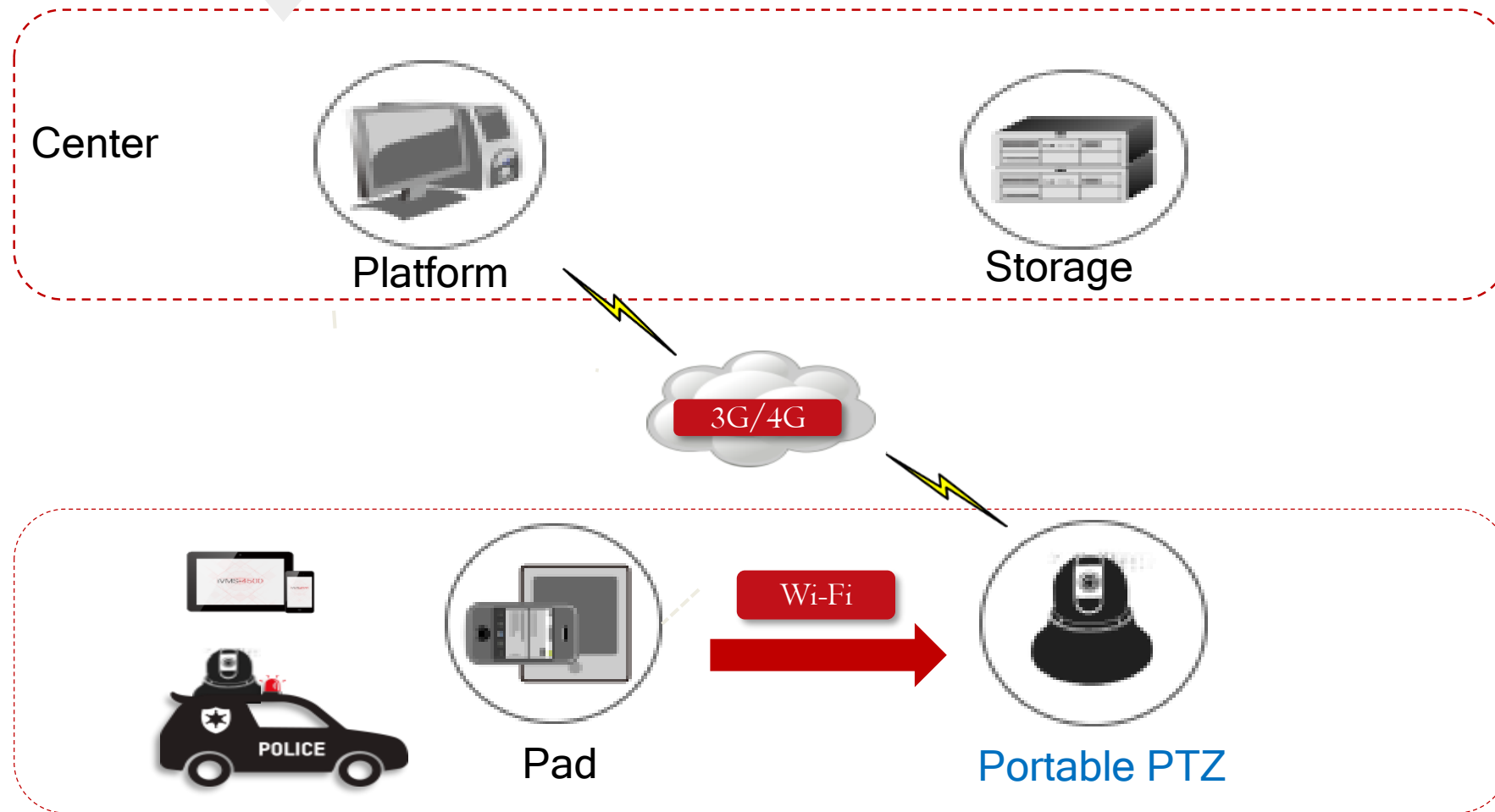


Fast Magnetic Mounting

UEFA Champions League Project, Ukraine

HIKVISION

System Structure



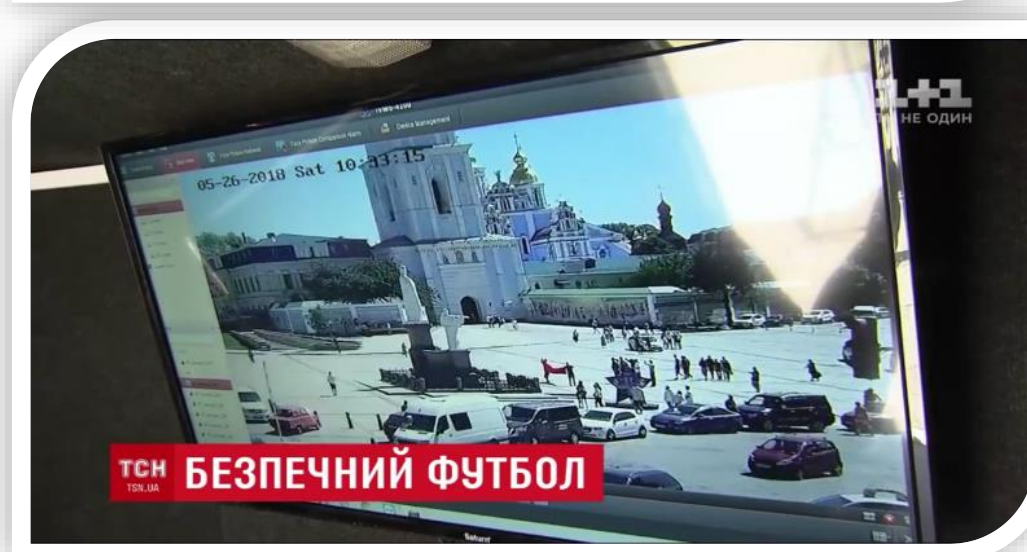
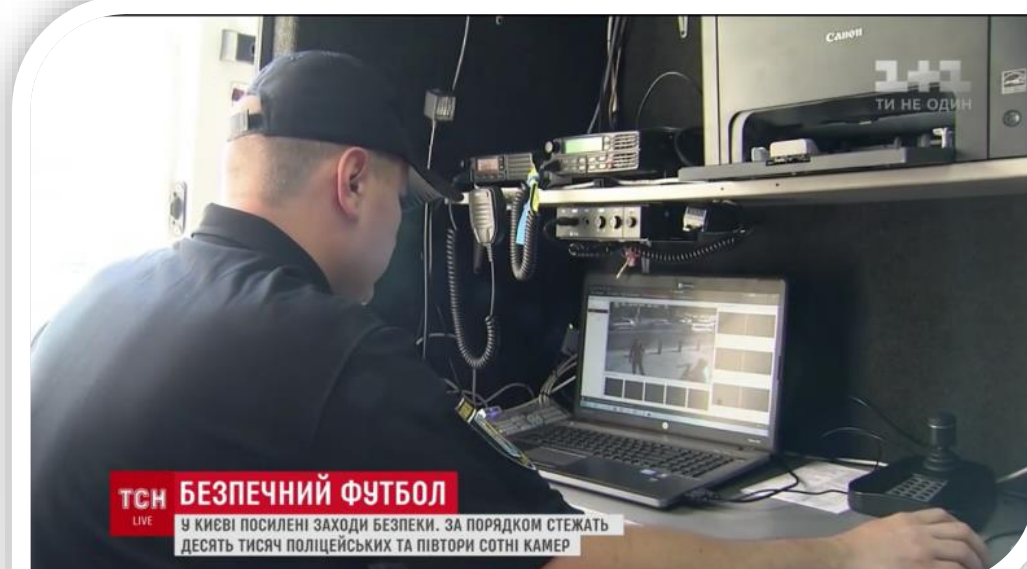
System Benefits

- ✓ Permanently installed surveillance systems are great, but it can be limited in scope. Mobile law enforcement equipment is more flexible can greatly improve the efficiency of law enforcement and quickly collect key information.
- ✓ Portable PTZ dome installed at the roof of vehicle or tripod mounting , both of on-board operating and iVMS remote operating are available. Event capture and important data are forwarded to monitoring center via flexible(3G/4G/Wi-Fi)network.

UEFA Champions League Project, Ukraine

HIKVISION®

System performance



Vehicle Inspection Project , Belgium

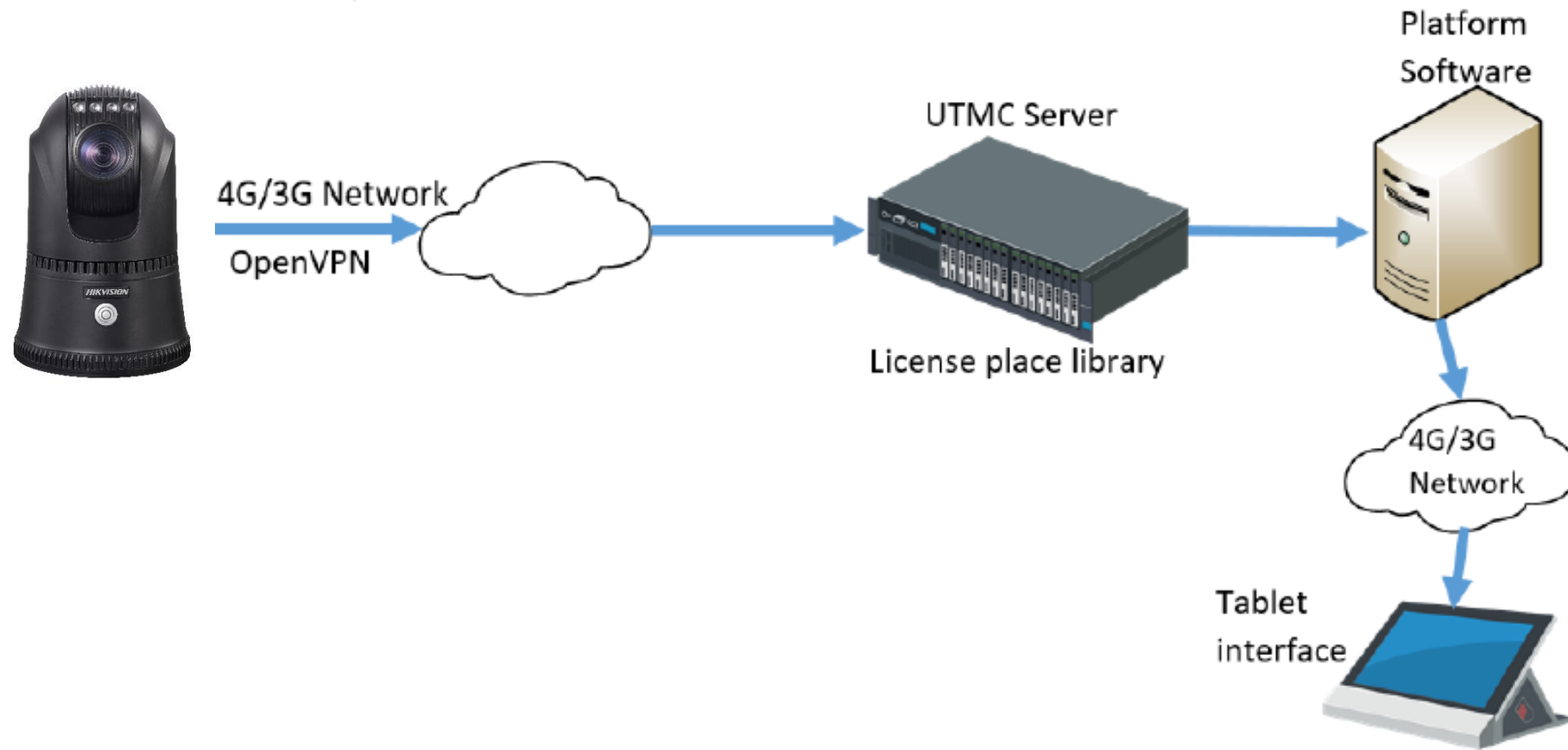
Project Overview



- Police officer track the vehicle which has illegal history such as tax evasion, overdue tax payment, unpaid insurance, criminal vehicle, stolen vehicle and so on.
- Normally, there would be a 200m to 500m block period that the vehicles have to be inspected.
- Two groups of officer would be at both ends of block to cooperate, while one check the tablet for checking the inspection result, and the other one stop the vehicle for further inspection.

Vehicle Inspection Project , Belgium

System Structure



Vehicle Inspection Project , Belgium

System performance



Metadata only



License in Black list is detected



Instant notification by image pop up

Punjab Safe-City Project , Pakistan

HIKVISION

Project Overview



- Punjab government has eagerness to modify their current safety situation and build a safer and more intelligent city for citizens.
- Hikvision portable PTZ dome helps Punjab policeman to record the illegal behaviors and keep safe in the city.
- During the patrol period, the director in the control center can get live view for every single vehicle at any time and communicate with police on duty in time.

HIKVISION[®]

A city skyline at night, featuring several skyscrapers with illuminated windows. The scene is captured with a long exposure, creating horizontal light trails in the foreground. The image is split diagonally by a dark blue line that runs from the top left towards the bottom right. The right side of the image is white, providing a background for the text.

THANKS

International Product Marketing Department