

ENGLISH

- 1. APPEARANCE**
1. Antenna 2. Wiring Terminal 3. Learn Button
- 2. WIRING**
1. Power Input Wiring
2. Relay Output Wiring
- 3. ENROLLMENT**
- 4. INSTALLATION**
Paste the expander on the required place with sponge tape.
- 5. FORMATTING**
Hold the Learn button for 8 s, and meanwhile power the expander on.

Specification

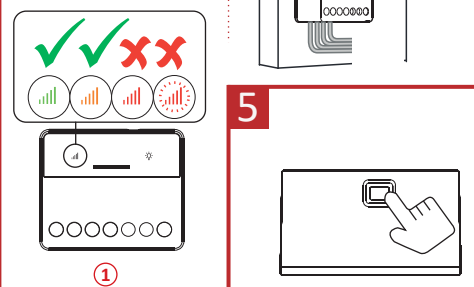
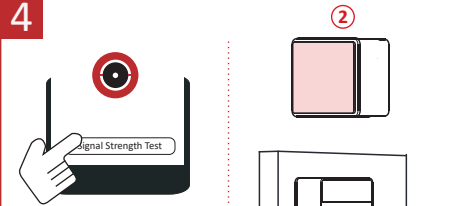
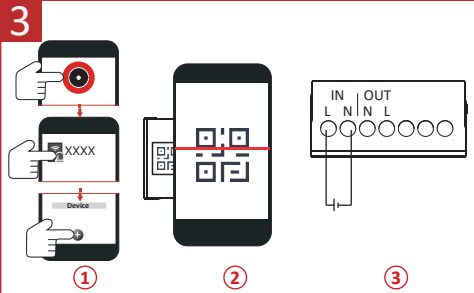
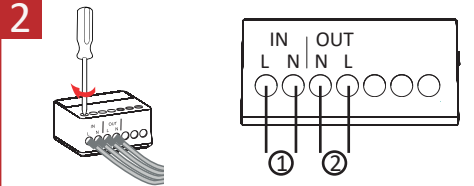
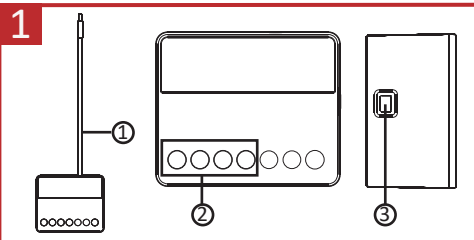
Function button	1, for initialization
Scenario settings	By alarm, by operation, by fault, by schedule, by manual
Relay output	1, NO/NC (100 to 240 VAC, Max. 13A)
Voltage protection	Supported, cutoff when >90V or <264 V
RF method	Two way communication
RF frequency	433 MHz
RF distance	800 m
Power supply	100 VAC to 240 VAC, 50/60 HZ
LED status	1, register/signal (green/red), power/green, relay/status (blue)
Operation temperature	-10 °C to +55 °C
Operation humidity	10% to 90%
Dimension (W x H x D)	38 x 25 x 18 mm
Weight	31.5 g
Installation method	Wall Mounting or Inside 86 box

ESPAÑOL

- 1. ASPECTO**
1. Antena 2. Terminal de cableado
3. Botón "Aprendizaje"
- 2. CABLEADO**
1. Cables de entrada de alimentación
2. Cables de salida del relé
- 3. REGISTRO**
- 4. INSTALACIÓN**
Pegue el expansor en el sitio adecuado usando cinta adhesiva esponjosa de doble cara.
- 5. FORMATEADO**
Mantenga pulsado el botón "Aprendizaje" durante 8 s, mientras se enciende el expansor.

Especificación

Botón de función	1, para inicialización
Configuración de escenario	por alarma, por operación, por fallo, programada, manual
Salida de relé	1, NO/NC (de 100 a 240 VAC, máx. 13 A)
Protección de tensión	compatible, se desconecta a tensiones >90 V o <264 V
Método de RF	Comunicación bidireccional
Frecuencia de RF	433 MHz
Distancia de RF	800 m
Fuente de alimentación	100 VCA a 240 VCA, 50/60 HZ
Estados del led	3, registro/senal (verde/rojo), encendido (verde), estado de relé (azul)
Temperatura de funcionamiento	De -10 °C a +55 °C
Humedad de funcionamiento	10% a 90%
Dimensiones	38 x 25 x 18 mm
Peso	31,5 g
Método de instalación	Montaje mural o en el interior de una caja 86



PORTUGUÊS (BRASIL)

- 1. APRESENTAÇÃO**
1. Antena 2. Terminal de fiação
3. Botão Aprender
- 2. CABOSFIAÇÃO**
1. Fiação da entrada de energia
2. Fiação da saída do relé
- 3. REGISTRO**
- 4. INSTALAÇÃO**
Cole o expansor no local desejado com fita de espuma.
- 5. FORMATAÇÃO**
Mantenha o botão Aprender pressionado por 8 s, e enquanto isso, ligue o expansor.

Especificações

Bolão de função	1, para inicialização
Configurações de cenário	Por alarme, por operação, por falha, por programação, por manual
Saída do relé	1, NA/NE (100 a 240 VCA, máx. de 13 A)
Proteção de tensão	Suportado, cortado quando > 90 V ou < 264 V
Método de RF	Comunicação bidirecional
Frequência de RF	433 MHz
Distância de RF	800 m
Fonte de alimentação	100 VCA a 240 VCA, 50/60 HZ
Status dos LEDs	3, registro/sinal (verde/vermelho), energia (verde), status do relé (azul)
Temperatura de operação	-10 °C a +55 °C
Limitação de operação	10% a 90%
Dimensões (L x A x P)	38 x 25 x 18 mm
Peso	31,5 g
Método de instalação	Montagem na parede ou dentro da caixa 86

SLOVENŠČINA

- 1. PREGLED NAPRAVE**
1. Antena 2. Terminal za ožičenje
3. Gumb za učenje
- 2. OŽIČENJE**
1. Ožičenje vhoda za napajanje
2. Ožičenje izhoda za rele
- 3. VPIS**
- 4. NAMESTITEV**
Razširjevalnik prilepite na zeleno mesto s penastim trakom.
- 5. FORMATIRANJE**
Držite gumb za učenje 8 s, medtem pa vklopite razširjevalnik.

Tehnični podatki

Funkcijski gumb	1, za namestitev
Nastavitve scenarija	Alarm, operacija, napaka, umik, ročno
Izhod releja	1, NO/NC (od 100 do 240 V AC, največ 13 A)
Največja zaščita	Podprt, prekinitve pri >90 V ali < 264 V
Metoda RF	Dvostranna komunikacija
RF frekvenca	433 MHz
Razdalja RF	800 m
Napajanje	100 V AC to 240 V AC, 50/60 HZ
Stanje LED lučk	3, registracija/signal (zeleno/rdeča), napajanje (zeleno), stanje releja (modra)
Operativna temperatura	-10°C do +55°C
Operativna vlažnost	od 10 do 90 %
Dimenzije (S x v x G)	38 x 25 x 18 mm
Teža	31,5 g
Metoda namestitve	Stenska namestitev ali v ohišje 86

SRPSKI

- 1. IZGLED**
1. Antena 2. Terminal za instalacije
3. Dugme za uparivanje
- 2. POVEZIVANJE INSTALACIJA**
1. Ožičenje ulaza za napajanje
2. Ožičenje izlaza za relej
- 3. UVRŠTAVANJE**
- 4. INSTALACIJA**
Zalepite proširivač na odgovarajuće mesto pomoću sunderaste lepljive trake.
- 5. FORMATIRANJE**
Držite dugme za uparivanje 8 sekundi i za to vreme uključite proširivač.

Specifikacija

Funkcijski dugme	1, za pokretanje
Podešavanje scenarija	Prema alarmu, prema radnji, prema grešci, prema rasporedu, prema priračniku
Izlaz releja	1, NO/NC (od 100 do 240 VAC, Maks. 13A)
Naponska zaštita	Podržano, prekid kad je >90 V ili < 264 V
RF metoda	Dvostranna komunikacija
RF frekvencija	433 MHz
RF razdaljina	800 m
Napajanje	Od 100 VAC do 240 VAC, 50/60 HZ
Status LED-a	3, registracija/signal (zeleno/crveno), napajanje (zeleno), status releja (plavo)
Radna temperatura	Od -10 °C do +55 °C
Radna vlažnost	Od 10 % do 90 %
Dimenzije (S x V x D)	38 x 25 x 18 mm
Težina	31,5 g
Način instalacije	Postavljanje na zid ili unutar 86 kutije

HEBREW

- 1. תרשומת המוצר**
1. אנטנה 2. מסוף חיווט
3. מתח לחיט
- 2. תנאי התקנה**
1. חיווט כניסת חשמל
2. חיווט יציאת ממסר
- 3. הרשמה**
- 4. התקנה**
הדבק את המרחיב במקום שדרוש באמצעות סרט ספוגי.
- 5. פירמט**
החזק את הפנתון "Learn" במשך 8 שניות ובינתיים החלק את המרחיב.

မြန်မာ

- 1. အသွင်အပြင်လက္ခဏာ**
1. အင်တီနာ 2. ဝါယာတပ်ဆင်ရန် ဆွဲရန်
3. Learn ဓလ္လင်
- 2. ဝါယာကြိုးသွယ်တန်းခြင်း**
1. ဝါယာတပ်ဆင် ဝါယာကြိုးသွယ်တန်းရန်
2. နီရောင်အသွင်ကို ဝါယာကြိုးသွယ်တန်းရန်
- 3. တပ်ဆင်ခြင်း**
4. စာရင်းသွင်းခြင်း
- 5. တပ်ဆင်ခြင်း**
လိုအပ်သောနေရာတွင် တိုချို့ကိရိယာကို ဖြေရှင်းတပ်ဆင်ခြင်းကိုပါ
ပုံစံချခြင်း
Learn ဓလ္လင်ကို 8 စက္ကန့်ကိုင်ထားပါ။ ထိုအချိန်တွင် တိုချို့ကိရိယာပါဝင်ကို ဖွင့်ပါ။

מפרט

1. אנטנה	1. Antena
2. מסוף חיווט	2. Terminal de fiação
3. מתח לחיט	3. Botão Aprender
1. חיווט כניסת חשמל	1. Fiação da entrada de energia
2. חיווט יציאת ממסר	2. Fiação da saída do relé
הרשמה	REGISTRO
התקנה	INSTALAÇÃO
החזק את הפנתון "Learn" במשך 8 שניות ובינתיים החלק את המרחיב.	Mantenha o botão Aprender pressionado por 8 s, e enquanto isso, ligue o expansor.
3. רישום (לחיצה)	3. registro/sinal
4. התקנת המרחיב	4. instalação
5. פירמט	5. formatação
מפרט	Especificações
מספר מודלים	Modelos
433MHz	433 MHz
800 m	800 m
100 VAC to 240 VAC, 50/60 HZ	100 VAC to 240 VAC, 50/60 HZ
3, registro/sinal (verde/rojo), encendido (verde), estado de relé (azul)	3, registro/sinal (verde/rojo), encendido (verde), estado de relé (azul)
-10 °C to +55 °C	-10 °C to +55 °C
10% to 90%	10% to 90%
38 x 25 x 18 mm	38 x 25 x 18 mm
31.5 g	31.5 g
86	86

အထူးသတိပြုရန်

1. အသွင်အပြင်	1. Appearance
2. ဝါယာကြိုးသွယ်တန်းခြင်း	2. Wiring
3. တပ်ဆင်ခြင်း	3. Enrollment
4. စာရင်းသွင်းခြင်း	4. Installation
5. တပ်ဆင်ခြင်း	5. Formatting
မူပိုင်ခွင့်	Copyright
အသွင်အပြင်	Appearance
ဝါယာကြိုးသွယ်တန်းခြင်း	Wiring
တပ်ဆင်ခြင်း	Enrollment
စာရင်းသွင်းခြင်း	Installation
တပ်ဆင်ခြင်း	Formatting
မူပိုင်ခွင့်	Copyright

ENGLISH

©2021 Hangzhou Hikvision Digital Technology Co., Ltd. All rights reserved. About this Manual: The Manual provides instructions for using and managing the Product. Pictures, charts, images and all other information herein are for description and explanation only. The information contained in the Manual is subject to change without notice and may differ from the actual product. Please refer to the latest version of this Manual at the Hikvision website (https://www.hikvision.com/).

This product and its applicable - the supplied accessories too are marked with "CE" and comply therefore with the applicable harmonized European standards listed under the RE Directive 2012/19/EU (WEEE Directive). Products marked with this symbol cannot be disposed of as unsorted municipal waste. The symbol indicates that the product is subject to your local authority upon the purchase of equivalent new equipment, or dispose of it at designated collection points. For more information, please visit www.recycleit.org.uk.

Indicates hazardous live and the external wiring connected to the terminals requires installation by an instructed person.

HEBREW

©2021 Hangzhou Hikvision Digital Technology Co., Ltd. All rights reserved. About this Manual: The Manual provides instructions for using and managing the Product. Pictures, charts, images and all other information herein are for description and explanation only. The information contained in the Manual is subject to change without notice and may differ from the actual product. Please refer to the latest version of this Manual at the Hikvision website (https://www.hikvision.com/).

- 1. The diagram shows the correct connection method for the power supply.
2. The diagram shows the correct connection method for the power supply.
3. The diagram shows the correct connection method for the power supply.
4. The diagram shows the correct connection method for the power supply.
5. The diagram shows the correct connection method for the power supply.
6. The diagram shows the correct connection method for the power supply.
7. The diagram shows the correct connection method for the power supply.
8. The diagram shows the correct connection method for the power supply.
9. The diagram shows the correct connection method for the power supply.
10. The diagram shows the correct connection method for the power supply.

Indicates hazardous live and the external wiring connected to the terminals requires installation by an instructed person.

ESPAÑOL

©2021 Hangzhou Hikvision Digital Technology Co., Ltd. Todos los derechos reservados. Sobre este manual: Este manual proporciona instrucciones de uso y gestión del producto. Las figuras, gráficos e imágenes y toda otra información aquí contenida son para fines descriptivos e informativos. La información contenida en el manual está sujeta a cambios sin previo aviso y puede diferir del producto real. Consulte el sitio web de Hikvision (https://www.hikvision.com/) para acceder a la última versión de este manual.

This product and its applicable - the supplied accessories too are marked with "CE" and comply therefore with the applicable harmonized European standards listed under the RE Directive 2012/19/EU (WEEE Directive). Products marked with this symbol cannot be disposed of as unsorted municipal waste. The symbol indicates that the product is subject to your local authority upon the purchase of equivalent new equipment, or dispose of it at designated collection points. For more information, please visit www.recycleit.org.uk.

Indicates hazardous live and the external wiring connected to the terminals requires installation by an instructed person.

PORTUGUÊS

©2021 Hangzhou Hikvision Digital Technology Co., Ltd. Todos los derechos reservados. Sobre este manual: Este manual proporciona instrucciones de uso y gestión del producto. Las figuras, gráficos e imágenes y toda otra información aquí contenida son para fines descriptivos e informativos. La información contenida en el manual está sujeta a cambios sin previo aviso y puede diferir del producto real. Consulte el sitio web de Hikvision (https://www.hikvision.com/) para acceder a la última versión de este manual.

- 1. The diagram shows the correct connection method for the power supply.
2. The diagram shows the correct connection method for the power supply.
3. The diagram shows the correct connection method for the power supply.
4. The diagram shows the correct connection method for the power supply.
5. The diagram shows the correct connection method for the power supply.
6. The diagram shows the correct connection method for the power supply.
7. The diagram shows the correct connection method for the power supply.
8. The diagram shows the correct connection method for the power supply.
9. The diagram shows the correct connection method for the power supply.
10. The diagram shows the correct connection method for the power supply.

Indicates hazardous live and the external wiring connected to the terminals requires installation by an instructed person.

PORTUGUÊS

©2021 Hangzhou Hikvision Digital Technology Co., Ltd. Todos los derechos reservados. Sobre este manual: Este manual proporciona instrucciones de uso y gestión del producto. Las figuras, gráficos e imágenes y toda otra información aquí contenida son para fines descriptivos e informativos. La información contenida en el manual está sujeta a cambios sin previo aviso y puede diferir del producto real. Consulte el sitio web de Hikvision (https://www.hikvision.com/) para acceder a la última versión de este manual.

This product and its applicable - the supplied accessories too are marked with "CE" and comply therefore with the applicable harmonized European standards listed under the RE Directive 2012/19/EU (WEEE Directive). Products marked with this symbol cannot be disposed of as unsorted municipal waste. The symbol indicates that the product is subject to your local authority upon the purchase of equivalent new equipment, or dispose of it at designated collection points. For more information, please visit www.recycleit.org.uk.

Indicates hazardous live and the external wiring connected to the terminals requires installation by an instructed person.

SLOVENŠČINA

©2021 Hangzhou Hikvision Digital Technology Co., Ltd. Todos los derechos reservados. Sobre este manual: Este manual proporciona instrucciones de uso y gestión del producto. Las figuras, gráficos e imágenes y toda otra información aquí contenida son para fines descriptivos e informativos. La información contenida en el manual está sujeta a cambios sin previo aviso y puede diferir del producto real. Consulte el sitio web de Hikvision (https://www.hikvision.com/) para acceder a la última versión de este manual.

- 1. The diagram shows the correct connection method for the power supply.
2. The diagram shows the correct connection method for the power supply.
3. The diagram shows the correct connection method for the power supply.
4. The diagram shows the correct connection method for the power supply.
5. The diagram shows the correct connection method for the power supply.
6. The diagram shows the correct connection method for the power supply.
7. The diagram shows the correct connection method for the power supply.
8. The diagram shows the correct connection method for the power supply.
9. The diagram shows the correct connection method for the power supply.
10. The diagram shows the correct connection method for the power supply.

Indicates hazardous live and the external wiring connected to the terminals requires installation by an instructed person.

SLOVENŠČINA

©2021 Hangzhou Hikvision Digital Technology Co., Ltd. Todos los derechos reservados. Sobre este manual: Este manual proporciona instrucciones de uso y gestión del producto. Las figuras, gráficos e imágenes y toda otra información aquí contenida son para fines descriptivos e informativos. La información contenida en el manual está sujeta a cambios sin previo aviso y puede diferir del producto real. Consulte el sitio web de Hikvision (https://www.hikvision.com/) para acceder a la última versión de este manual.

This product and its applicable - the supplied accessories too are marked with "CE" and comply therefore with the applicable harmonized European standards listed under the RE Directive 2012/19/EU (WEEE Directive). Products marked with this symbol cannot be disposed of as unsorted municipal waste. The symbol indicates that the product is subject to your local authority upon the purchase of equivalent new equipment, or dispose of it at designated collection points. For more information, please visit www.recycleit.org.uk.

Indicates hazardous live and the external wiring connected to the terminals requires installation by an instructed person.

SRPSKI

©2021 Hangzhou Hikvision Digital Technology Co., Ltd. Todos los derechos reservados. Sobre este manual: Este manual proporciona instrucciones de uso y gestión del producto. Las figuras, gráficos e imágenes y toda otra información aquí contenida son para fines descriptivos e informativos. La información contenida en el manual está sujeta a cambios sin previo aviso y puede diferir del producto real. Consulte el sitio web de Hikvision (https://www.hikvision.com/) para acceder a la última versión de este manual.

- 1. The diagram shows the correct connection method for the power supply.
2. The diagram shows the correct connection method for the power supply.
3. The diagram shows the correct connection method for the power supply.
4. The diagram shows the correct connection method for the power supply.
5. The diagram shows the correct connection method for the power supply.
6. The diagram shows the correct connection method for the power supply.
7. The diagram shows the correct connection method for the power supply.
8. The diagram shows the correct connection method for the power supply.
9. The diagram shows the correct connection method for the power supply.
10. The diagram shows the correct connection method for the power supply.

Indicates hazardous live and the external wiring connected to the terminals requires installation by an instructed person.