

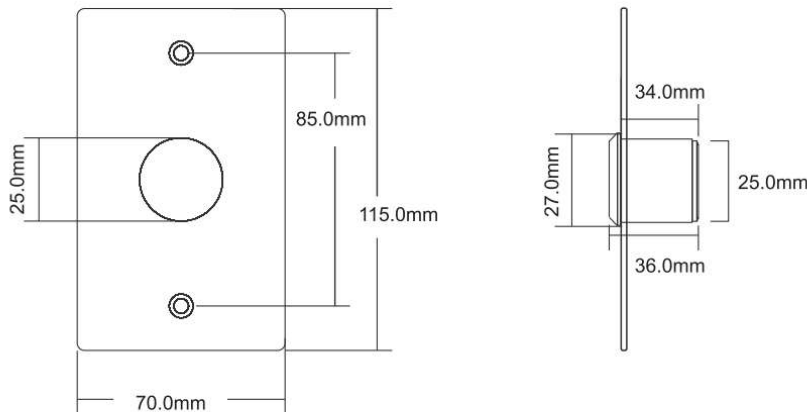
Xbutton 7

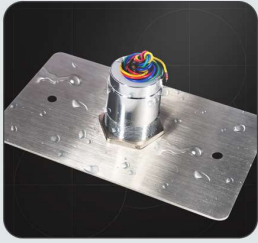
Waterproof No Touch Exit Button

- > Waterproof, IP65
- > 304 Stainless steel
- > 12~24V DC
- > Output contact: NO/NC/COM
- > Sensor Distance: 5~25cm (Adjustable)
- > Blue LED indicator: standby
- > Green LED indicator: active
- > Dimension: 7.0W x 11.5H x 3.6D (cm)

Especificaciones

Product Parameter	Parameter Description
Dimensions	7.0W x 11.5H x 3.6D (cm)
Standard Structure	304 Stainless steel panel, touch button
Current Rating	3A@12~24V DC MAX
Output Contact	NO/NC/COM
Mechanical Life	100000 tested
Sensitive Distance	5-25cm adjustable
Operating Temperature	-20 °C ~ 55 °C (-4 °F ~ 131 °F)
Operating Humidity	0% ~ 95% (relative humidity)
Working Environment	Waterproof, IP65
Panel Material	Stainless steel panel, wire drawing finished
Weight	0.15kg





Outdoor, IP65

Blue LED indicator
(Standby)
Green LED indicator
(Working)



Infrared sensing
distance: 5~25cm

Voltage:
12~24V DC



Stainless Steel

Output Contact :
NO/NC/COM

